



**PALM BEACH COUNTY TRANSPORTATION DISADVANTAGED (TD)  
LOCAL COORDINATING BOARD (LCB) AGENDA**

DATE: **Wednesday, November 16, 2022**  
TIME: **2:00 p.m.**  
PLACE: **301 Datura Street, West Palm Beach, FL 33401**

Attendees may not enter the TPA workplace if in the previous 5 days, they have tested positive for COVID-19, exhibited symptoms of COVID-19, or been in close contact with someone with COVID-19 and are unvaccinated.

To promote awareness of multimodal options for in-person attendance, a map of transportation facilities and services around the TPA Office is provided on page 3.

Members of the public can also join the meeting virtually in the following ways:

- Via Zoom app using Webinar ID: 890 0743 8985 and Password: 043861
- Via web browser at [PalmBeachTPA.org/LCB-Meeting](https://PalmBeachTPA.org/LCB-Meeting)
- Via phone at 1-646-558-8656 using the above Webinar ID and Password
- View a live simulcast at [PalmBeachTPA.org/LIVE](https://PalmBeachTPA.org/LIVE)

Please call 561-725-0800 or e-mail [info@PalmBeachTPA.org](mailto:info@PalmBeachTPA.org) for assistance joining the virtual meeting.

---

**1. REGULAR ITEMS**

- A. Call to Order and Pledge of Allegiance
- B. Roll Call
- C. Modifications to the Agenda
- D. MOTION TO APPROVE Minutes for August 24, 2022
- E. General Public Comments

Members of the public are invited to offer general comments unrelated to agenda items at this time. Public comments related to agenda items will be heard following staff presentation of the item. Comments may be submitted in the following ways:

- A written may be submitted at [PalmBeachTPA.org/LCB-Comment](https://PalmBeachTPA.org/LCB-Comment) at any time prior to the commencement of the relevant agenda item.
- A verbal comment may be provided by a virtual attendee using the raise hand feature in the Zoom platform.
- A verbal and/or written comment may be provided by an in-person attendee submitting a comment card available at the welcome table.

Note that the Chair may limit comments to 3 minutes or less depending on meeting attendance.

- F. Comments from the Chair and Member Comments
- G. LCB Liaison Report

## **2. ACTION ITEMS**

### **A. MOTION TO ADOPT FY 22 Annual Operating Report (AOR)**

The AOR provides a financial and operational overview of the TD program. As the Designated Official Planning Agency (DOPA), the TPA must annually review and approve the AOR and forward comments to the Commission for Transportation Disadvantaged (CTD). Palm Tran staff will present the attached AOR, which reviews FY 22 (July 1, 2021 – June 30, 2022).

## **3. INFORMATION ITEMS**

### **A. FY 22 Annual Expenditure Report (AER)**

The Palm Beach TPA, as the DOPA, must annually review the AER, which details all direct federal and local government funds spent on TD trips. Comments are forwarded to the CTD. A draft presentation and the FY 22 AER is attached.

### **B. LCB Member Training**

TPA staff will provide an overview of LCB member roles and responsibilities.

### **C. LCB Member Presentations**

Michael Corbit, Workforce Development Board will present on his roles and responsibilities related to the transportation disadvantaged. The LCB Member Presentation is attached.

### **D. Partner Agency Updates**

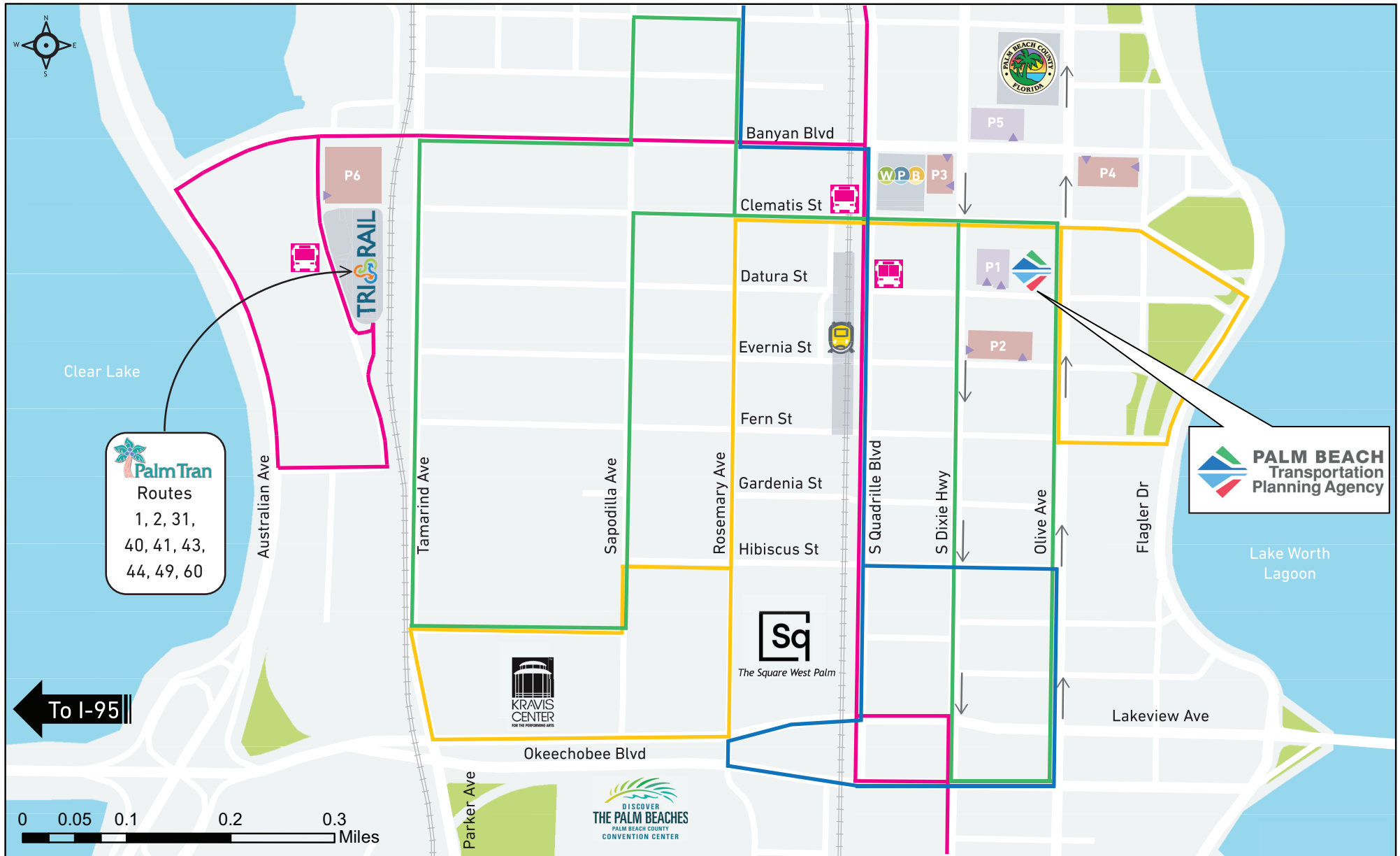
Agency staff from SFRTA/Tri-Rail, Florida Department of Transportation, and/or Palm Beach County may provide brief updates on items relevant to the LCB.

## **4. ADMINISTRATIVE ITEMS**

### **A. Next Meeting – **February 22, 2023****

### **B. 2023 Meeting Schedule**

### **C. Adjournment**



TPA Office Location



Public Parking



Private Parking

\*Metered on-street parking available citywide  
(free with Handicap placard up to 4 hours)



Palm Tran Bus Stop



Palm Tran Route 1



Yellow Trolley

Green Trolley

Blue Trolley



*brightline*



Free on-demand rides around  
West Palm Beach & Palm Beach  
7 days a week. Download the  
app to ride.



## TRANSPORTATION DISADVANTAGED LOCAL COORDINATING BOARD MEMBERS

### **CHAIR**

**Chelsea Reed, Mayor**

City of Palm Beach Gardens

**Milory Senat**

Agency for Persons with Disabilities

*Alternate: Pauline Spence*

**Vacant**

Area Agency on Aging

*Alternate: Nancy Yarnall*

**Uyen Dang**

Citizen Advocate

**Elisa Cramer**

Department of Children and Family Services

**Marielisa Amador**

Florida Agency for Health Care Administration

*Alternate: Jerome Hill*

**Marie Dorismond**

Florida Department of Transportation

*Alternate: Paula Scott*

**Angela Choice**

Florida Department of Veterans Affairs

**Vacant**

Palm Beach County Community Action

### **VICE CHAIR**

**Tekesha Saffold**

Citizen Advocate/User

**Vacant**

Private Transportation Industry

**Robyn Manuel**

Florida Division of Vocational Rehabilitation

**Merlene Ramnon**

Local Medical Community

**Laura Schultze**

Public Education

School District of Palm Beach County

**Elizabeth Clark**

Representative for Children at Risk

**Robert Goodman**

Representative for the Disabled

**James Bonfiglio**

Representative for the Elderly

**Michael Corbit**

Workforce Development Board

**Clinton Forbes**

Palm Tran (Mass/Public Transit Industry)

Community Transportation Coordinator (CTC)

Non-Voting Member

*Alternate: Vacant*

### **PURPOSE**

The purpose of the LCB is to identify local service needs and to provide information, advice, and direction to the Palm Beach County Community Transportation Coordinator, otherwise known as Palm Tran Connection, on the coordination of service to be provided to the transportation disadvantaged through the Florida Coordinated Transportation System. The LCB is recognized as an advisory body to the Commission for the Transportation Disadvantaged. Palm Tran's provision of TD service is funded with state dollars. This service is not mandated by Federal Law.

### **NOTICE**

In accordance with Section 286.0105, *Florida Statutes*, if a person decides to appeal any decision made by the board, agency, or commission with respect to any matter considered at such meeting or hearing, they will need a record of the proceedings, and that, for such purposes, they need to ensure that a verbatim record of the proceedings is made, which record includes the testimony and evidence upon which the appeal is to be based.

Public participation is solicited without regard to race, color, national origin, age, sex, religion, disability or family status. Persons who require a printed copy of the agenda package, require special accommodations under the Americans with Disabilities Act or require translation services for a meeting (free of charge) must call 561-725-0800 or email [Info@PalmBeachTPA.org](mailto:Info@PalmBeachTPA.org) at least five business days in advance. Hearing impaired individuals are requested to telephone the Florida Relay System at #711.



# PALM BEACH Transportation Planning Agency

# 1.D

## OFFICIAL MEETING MINUTES OF THE PALM BEACH COUNTY TRANSPORTATION DISADVANTAGED (TD) LOCAL COORDINATING BOARD (LCB) AGENDA

**Wednesday, August 24, 2022**

301 Datura Street, West Palm Beach, FL 33401  
Meeting was also conducted virtually via Zoom.

---

*These minutes are a summary of the meeting events and may not reflect all discussion that occurred.  
PDF versions of the agenda, backup material and presentations as well as audio recordings are available for review at  
[www.PalmBeachTPA.org/LCB](http://www.PalmBeachTPA.org/LCB)*

### **1. REGULAR ITEMS**

#### **1.A. Call to Order and Pledge of Allegiance**

MAYOR REED called the meeting to order at 2:03 p.m., provided an overview of the virtual meeting procedures, and led the Pledge of Allegiance.

#### **1.B. Roll Call**

The Recording Secretary called the roll. A quorum was present in-person as depicted in the table below.

Member	Roll Call	Member	Roll Call	Member	Roll Call
Milory Senat	P	Angela Choice	A	Robert Goodman	A
Vanessa Palomino	A	Jodie Boisvert	P	James Bonfiglio	P
Uyen Dang	P	Robyn Manuel	A	Private Transportation Industry	A
Elisa Cramer	P	Merlene Ramnon	P	Michael Corbit	P
Marielisa Amador	A	Laura Schultze	P	Tekesha Saffold	A
Marie Dorismond	P	Elizabeth Clark	P	Chelsea Reed	P

P = Present A = Absent

#### **1.C. APPROVED: Modifications to the Agenda**

The Recording Secretary stated the following members requested permission to participate remotely: Tekesha Saffold due to her work schedule, Robert Goodman due to being out of town, and Nancy Yarnall due to caretaking needs at home.

There were no objections to their virtual participation and the members were permitted to join the meeting. Note: Nancy Yarnall was not present virtually at this point.

**1.D. APPROVED: Minutes for May 25, 2022**

**MOTION to Approve the Modified Minutes made by James Bonfiglio, seconded by Uyen Dang, and carried unanimously 13-0 as depicted in the table below.**

Member	Vote	Member	Vote	Member	Vote
Milory Senat	Y	Angela Choice	A	Robert Goodman	Y
Vanessa Palomino	A	Jodie Boisvert	Y	James Bonfiglio	Y
Uyen Dang	Y	Robyn Manuel	A	Private Transportation Industry	A
Elisa Cramer	Y	Merlene Ramnon	Y	Michael Corbit	Y
Marielisa Amador	A	Laura Schultze	Y	Tekesha Saffold	Y
Marie Dorismond	Y	Elizabeth Clark	Y	Chelsea Reed	Y

Y = Yes N = No A = Absent ABST = Abstain

**1.E. GENERAL PUBLIC COMMENTS**

There were no general public comments received.

**1.F. MEMBER COMMENTS**

Nancy Yarnall joined the meeting online.

CHAIR REED congratulated Grég Gabriel on the birth of his daughter.

**1.G. LCB Liaison Report**

GRÉG GABRIEL reviewed the Liaison's Report, which can be viewed at [PalmBeachTPA.org/LCB](https://PalmBeachTPA.org/LCB). He welcomed Michael Corbit to the LCB.

There were no public or member comments received on this item.

**2. ACTION ITEMS****2.A. APPROVED: Fiscal Year (FY) 2023-2028 Transportation Disadvantaged Service Plan (TDSP) Major Update**

GRÉG GABRIEL provided an overview of the full draft FY 2023-2028 TDSP which can be viewed at [PalmBeachTPA.org/LCB](https://PalmBeachTPA.org/LCB). The TDSP major update must cover a five-year period, with minor updates performed annually.

There were no public or member comments received on this item.

**MOTION to approve Fiscal Year (FY) 2023-2028 Transportation Disadvantaged Service Plan (TDSP) Major Update made by James Bonfiglio and seconded by Laura Schultz and carried unanimously 14-0 as depicted in the table below.**

Member	Vote	Member	Vote	Member	Vote
Milory Senat	Y	Angela Choice	A	Robert Goodman	Y
Nancy Yarnall (Alt)	Y	Jodie Boisvert	Y	James Bonfiglio	Y
Uyen Dang	Y	Robyn Manuel	A	Private Transportation Industry	A
Elisa Cramer	Y	Merlene Ramnon	Y	Michael Corbit	Y
Marielisa Amador	A	Laura Schultze	Y	Tekesha Saffold	Y
Marie Dorismond	Y	Elizabeth Clark	Y	Chelsea Reed	Y

Y = Yes N = No A = Absent ABST = Abstain

**2.B. ADOPTED: FY 2023 LCB By-Laws**

The Florida CTD requires the LCB by-laws to be updated and presented annually for approval. The attached draft by-laws were reformatted and updated to reflect the current fiscal year.

There were no public or member comments received on this item.

**MOTION to Adopt the FY 2023 LCB By-Laws made by James Bonfiglio, seconded by Elisa Cramer and carried unanimously 14-0 as depicted in the table below.**

Member	Vote	Member	Vote	Member	Vote
Milory Senat	Y	Angela Choice	A	Robert Goodman	Y
Nancy Yarnall (Alt)	Y	Jodie Boisvert	Y	James Bonfiglio	Y
Uyen Dang	Y	Robyn Manuel	A	Private Transportation Industry	A
Elisa Cramer	Y	Merlene Ramnon	Y	Michael Corbit	Y
Marielisa Amador	A	Laura Schultze	Y	Tekesha Saffold	Y
Marie Dorismond	Y	Elizabeth Clark	Y	Chelsea Reed	Y

Y = Yes N = No A = Absent ABST = Abstain

## 2.C. **ADOPTED: the FY 2023 Grievance Procedures**

The Florida CTD requires the LCB Grievance Procedures to be updated and adopted annually, with a minimum commitment of three (3) LCB voting members to serve on the LCB Grievance Subcommittee.

There were no public comments received on this item.

Member discussion ensued and the following members volunteered to serve on the LCB Grievance Subcommittee:

- James Bonfiglio
- Uyen Dang
- Chelsea Reed

**MOTION to Adopt the FY 2023 Grievance Procedures made by James Bonfiglio, seconded by Uyen Dang and carried unanimously 14-0 as depicted in the table below.**

Member	Vote	Member	Vote	Member	Vote
Milory Senat	Y	Angela Choice	A	Robert Goodman	Y
Nancy Yarnall (Alt)	Y	Jodie Boisvert	Y	James Bonfiglio	Y
Uyen Dang	Y	Robyn Manuel	A	Private Transportation Industry	A
Elisa Cramer	Y	Merlene Ramnon	Y	Michael Corbit	Y
Marielisa Amador	A	Laura Schultze	Y	Tekesha Saffold	Y
Marie Dorismond	Y	Elizabeth Clark	Y	Chelsea Reed	Y

Y = Yes N = No A = Absent ABST = Abstain

## 3. **INFORMATION ITEMS**

### 3.A. **DISCUSSED: CTC Update**

LOU FERRI provided presentation that can be viewed at [PalmBeachTPA.org/LCB](https://PalmBeachTPA.org/LCB). He discussed a recent theft at Palm Tran facilities and driver shortages.

There were no public comments received on this item.

Member discussion ensued about driver recruitment and security at Palm Tran facilities.

### 3.B. **DISCUSSED: June 2022 Palm Tran Connection (PTC) Monthly Operating Report**

LOU FERRI discussed the PTC which can be viewed at [PalmBeachTPA.org/LCB](https://PalmBeachTPA.org/LCB).

There were no public comments received on this item.

Member discussion ensued about trip purpose and categorization.

### **3.C. LCB Member Presentations**

LAURA SCHULTZ, MILORY SENAT, ELISA CRAMER and TANYA CASSIDE, FL Department of Children and Families, each provided an LCB Member Presentation which can be viewed at [PalmBeachTPA.org/LCB](http://PalmBeachTPA.org/LCB). They each discussed their role and their agency's connection to transportation.

There were no public comments received on this item.

Member discussion ensued about the School District of Palm Beach County's travel trainers program, crisis letters received by the Agency for Persons with Disabilities, and protective services under the Department of Children and Family Services.

### **3.B. Partner Agency Updates**

JODIE BOISVERT provided information about the Economic Mobility Summit.

MERLENE RAMNON noted an upcoming event supporting the Glades community.

ROBERT GOODMAN shared about a Community Service Expo in November.

## **4. ADMINISTRATIVE ITEMS**

### **4.A. LCB Timeline**

#### **4.A. Next Meeting – November 16, 2022**

### **4.B. Adjournment**

There being no further business the meeting was adjourned at 3:32 p.m.

---

This signature is to attest that the undersigned is the Chair, or a designated nominee, of the Transportation Disadvantaged Local Coordinating Board and that information provided herein is the true and correct Minutes for the **August 24, 2022** meeting of the Transportation Disadvantaged Local Coordinating Board, dated this 16th day of November 2022.

---

Chair Chelsea S. Reed  
City of Palm Beach Gardens Mayor



**EXHIBIT A**  
**Palm Beach County Transportation Disadvantaged Local Coordinating Board**  
**Attendance Record**

<b>Representative/Alternate</b> Agency	<b>Feb 24 2021</b>	<b>May 26 2021</b>	<b>Aug 25 2021</b>	<b>Nov 17 2021</b>	<b>Feb 23 2022</b>	<b>May 25 2022</b>	<b>Aug 24 2022</b>
<b>Mayor Chelsea Reed</b> <i>Chair – Palm Beach TPA</i>	P	P	P	P	P	***P	P
<b>Tekesha Saffold</b> <i>Vice Chair - Citizen Advocate/User</i>	P	P	P	P	P	P	P
<b>Milory Senat</b> /Pauline Spence Agency for Persons with Disabilities	P	P	P	P	P	P	P
<b>VACANT</b> /Nancy Yarnall Area Agency on Aging	***p	P	P	P	P	P	ALT
<b>Uyen Dang</b> Citizen Advocate	***p	P	P	P	P	E	P
<b>Elisa Cramer</b> FL Department of Children & Families	E	P	P	P	P	P	P
<b>Marielisa Amador</b> / Jerome Hill FL Agency for Healthcare Administration/ Medicaid Program	P	ALT	ALT	ALT	P	P	E
<b>Marie Dorismond</b> /Paula Scott Florida Department of Transportation	P	A	ALT	P	P	P	P
<b>Angela Choice</b> FL Department of Veteran's Affairs	P	E	P	P	P	P	E
<b>Jodie Boisvert</b> Department of Community Services	P	E	P	***p	P	E	P
<b>VACANT</b> Private Transportation	P	E	P	E	--	--	--
<b>Robyn Manuel</b> Department of Education/Division of Vocational Rehabilitation	P	E	P	P	P	P	E
<b>Merlene Ramnon</b> FL Department of Health for Palm Beach County	P	P	P	P	P	A	P
<b>Laura Schultze</b> School District of Palm Beach County	P	P	P	P	P	P	P
<b>Elizabeth Clark</b> Representative for Children at Risk	--	--	--	--	***p	P	P
<b>Robert Goodman</b> Representative for the Disabled	P	P	P	E	E	E	P
<b>James Bonfiglio</b> Representative for the Elderly	A	A	A	***p	P	P	P
<b>Michael Corbit</b> Workforce Development Board	E	P	P	P	--	--	***p

\*\*\* – New Appointment  
E – Excused

P – Representative Present  
A – Absent

ALT– Alternate Present  
-- – Vacant

EXHIBIT A (cont.)

OTHERS PRESENT

Jean Malacko  
Paige Patterson  
Sherika Perez  
Lou Ferri  
Sue Jay Collins  
Tanya Casside  
Cassidy Sparks  
Amanda Williams  
Grég Gabriel  
Brian Ruscher

REPRESENTING

General Public  
General Public  
Division of Blind Services  
Palm Tran  
FL Department of Children and Families  
FL Department of Children and Families  
Palm Beach TPA  
Palm Beach TPA  
Palm Beach TPA  
Palm Beach TPA

- 1. Local Coordinating Board (LCB) Liaison and Member 1 on 1:** Members are encouraging to contact the LCB Liaison with comments and questions on agenda items.
- 2. Introduction Call:** Please schedule time to meet with Mr. Gabriel to introduce yourself and learn more about the Transportation Disadvantaged Program and LCB. For more information visit: [Calendly.com/GGabriel-1/15Min](https://calendly.com/GGabriel-1/15Min).
- 3. TPA Governing Board Meeting:** The next TPA Governing Board meeting will be held on December 15, 2022 at 9:00 a.m. both in-person and virtually. To view the agenda packet and meeting details, visit [PalmBeachTPA.org/Board](https://PalmBeachTPA.org/Board).
- 4. Recap – 2022 CTD Conference and Training Workshop:** The LCB Chair and Liaison participated in the 2022 Conference – Training Workshop and Expo from August 20 – 31.

# 2.A

**Fiscal Year  
2021-2022  
Annual  
Operating  
Report (AOR)**

Claudia Salazar  
Grants & Capital Project Analyst  
Louis Ferri  
Senior Manager Paratransit Services



1

## Understanding the AOR

- The Annual Operating Report (AOR) provides a financial and operational overview of the TD program.
- Information is collected to:
  - Evaluate certain performance aspects of the coordinated systems individually and as a whole. The Commission for Transportation Disadvantaged (CTD) also uses data collected to substantiate the need to seek additional funds.

2

2

## AOR Requirements

- AOR is a requirement of the Community Transportation Coordinator (CTC) pursuant to Chapter 427, Florida Statutes and is due by September 15 each year.
- The state AOR is completed by the Commission for the Transportation Disadvantaged (CTD) on January 1st each year and delivered to the Governor, Legislature and Commission to substantiate the need for additional funds.

3

3

## Trips By Type of Service

	FY 20	FY 21	FY22
Fixed Route (FR)	603,792	355,804	132,338
Deviated FR	0	0	0
Complementary ADA	592,415	474,394	533,965
Paratransit	150,719	70,865	78,213
TNC	0	0	0
Taxi	0	0	0
Volunteers	0	0	0
<b>TOTAL TRIPS</b>	<b>1,346,926</b>	<b>901,063</b>	<b>744,516</b>

4

4

## Trips by Trip Purpose

	FY 20	FY 21	FY22
Medical	108,962	96,004	99,467
Employment	458,872	314,121	254,132
Ed/Train/DayCare	567,026	183,077	237,534
Nutritional	73,228	30,515	33,378
Life-Sustaining/Other	138,838	277,346	120,005
<b>TOTAL TRIPS</b>	<b>1,346,926</b>	<b>901,063</b>	<b>744,516</b>

5

5

## Vehicle Data

	FY 20	FY 21	FY 22
Vehicle Miles	10,672,223	9,189,260	9,919,499
Roadcalls	1,597	1,044	552
Accidents	118	95	112
Vehicles	292	331	310
Drivers	436	349	377

6

6

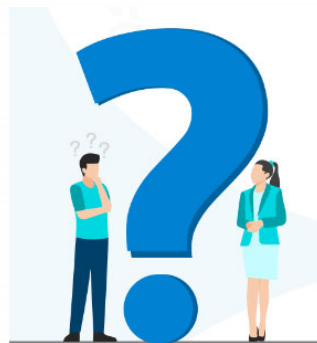
## AOR Summary

	FY 19-20	FY 20-21	FY 21-22
CTC Trips	1,346,926	901,063	744,516
Vehicle Miles	10,672,223	9,189,260	9,919,499
No Shows	4,040	22,450	2,228
Complaints	2,156 0.0016%	1,258 0.0014%	1,757 0.0023%

7

7

## Questions?



8

8



## Motion

- Palm Tran submitted the AOR on September 15, 2022.

Palm Tran respectfully requests a Motion to Adopt the FY 21-22 Annual Operating Report (AOR) covering:  
July 1, 2021 to June 30, 2022

9





# CTC Organization

**County:** Palm Beach

**Fiscal Year:** 7/1/2021 - 6/30/2022

**CTC Status:** Submitted

**CTD Status:** Under Review

**Date Initiated:** 9/14/2022

**CTC Organization Name:** Palm Beach County  
**Address:** 50 South Military Trail  
**City:** West Palm Beach  
**State:** FL  
**Zip Code:** 33415

**Organization Type:** County  
**Network Type:** Partial Brokerage

**Operating Environment:** Urban

**Transportation Operators:** Yes

**Number of Transportation Operators:** 2

**Coordination Contractors:** No

**Number of Coordination Contractors:** 0

**Provide Out of County Trips:** No

**Local Coordinating Board (LCB) Chairperson:** Chelsea Reed

**CTC Contact:** Lou Ferri

**CTC Contact Title:** Senior Manager of Paratransit

**CTC Contact Email:** LFerri@pbcgov.org

**Phone:** (561) 812-5350

## CTC Certification

I, Lou Ferri, as the authorized Community Transportation Coordinator (CTC) Representative, hereby certify, under the penalties of perjury as stated in Chapter 837.06, F.S., that the information contained in this report is true, accurate, and in accordance with the accompanying instructions.

CTC Representative (signature): \_\_\_\_\_

## LCB Certification

I, Chelsea Reed, as the Local Coordinating Board Chairperson, hereby, certify in accordance with Rule 41-2.007(6), F.A.C. that the Local Coordinating Board has reviewed this report and the Planning Agency has received a copy.

LCB Chairperson (signature): \_\_\_\_\_



# CTC Trips

County: Palm Beach

CTC Status: Submitted

CTC Organization: Palm Beach County

Fiscal Year: 07/01/2021 - 06/30/2022

CTD Status: Under Review

	Selected Reporting Period			Previous Reporting Period		
	CTC & Transportation Operators	Coordination Contractors	Total	CTC & Transportation Operators	Coordination Contractors	Total
<b>Service Type - One Way</b>						
Fixed Route/Fixed Schedule						
Daily Pass Trips	74	N/A	74	824	N/A	824
Weekly Pass Trips	0	N/A	0	0	N/A	0
Monthly Pass Trips	158,520	N/A	158,520	354,980	N/A	354,980
Deviated Fixed Route Service	0	N/A	0	0	N/A	0
Complementary ADA Service	560,221	N/A	560,221	474,394	N/A	474,394
Paratransit						
Ambulatory	92,854	0	92,854	62,317	0	62,317
Non-Ambulatory	11,617	0	11,617	8,548	0	8,548
Stretcher	0	0	0	0	0	0
Transportation Network Companies	0	N/A	0	0	N/A	0
Taxi	0	N/A	0	0	N/A	0
School Board (School Bus)	0	N/A	0	0	N/A	0
Volunteers	0	N/A	0	0	N/A	0
<b>Total - Service Type</b>	<b>823,286</b>	<b>0</b>	<b>823,286</b>	<b>901,063</b>	<b>0</b>	<b>901,063</b>
<b>Contracted Transportation Operator</b>						
How many of the total trips were provided by Contracted Transportation Operators? (If the CTC provides transportation services, do not include the CTC)	664,692	N/A	664,692	545,259	N/A	545,259
<b>Total - Contracted Transportation Operator Trips</b>	<b>664,692</b>	<b>0</b>	<b>664,692</b>	<b>545,259</b>	<b>0</b>	<b>545,259</b>
<b>Revenue Source - One Way</b>						
Agency for Health Care Administration (AHCA)	0	0	0	0	0	0
Agency for Persons with Disabilities (APD)	0	0	0	0	0	0
Comm for the Transportation Disadvantaged (CTD)	179,860	N/A	179,860	70,865	N/A	70,865
Dept of Economic Opportunity (DEO)	0	0	0	0	0	0
Dept of Children and Families (DCF)	0	0	0	0	0	0
Dept of Education (DOE)	0	0	0	0	0	0
Dept of Elder Affairs (DOEA)	0	0	0	0	0	0
Dept of Health (DOH)	0	0	0	0	0	0
Dept of Juvenile Justice (DJJ)	0	0	0	0	0	0
Dept of Transportation (DOT)	0	0	0	0	0	0
Local Government	643,426	0	643,426	736,951	0	736,951
Local Non-Government	0	0	0	0	0	0
Other Federal & State Programs	0	0	0	93,247	0	93,247
<b>Total - Revenue Source</b>	<b>823,286</b>	<b>0</b>	<b>823,286</b>	<b>901,063</b>	<b>0</b>	<b>901,063</b>



## CTC Trips (cont'd)

County: Palm Beach

CTC Status: Submitted

CTC Organization: Palm Beach County

Fiscal Year: 07/01/2021 - 06/30/2022

CTD Status: Under Review

	Selected Reporting Period			Previous Reporting Period		
	CTC & Transportation Operators	Coordination Contractors	Total	CTC & Transportation Operators	Coordination Contractors	Total
<b>Passenger Type - One Way</b>						
Older Adults	305,460	0	305,460	275,786	0	275,786
Children At Risk	0	0	0	0	0	0
Persons With Disabilities	342,305	0	342,305	255,692	0	255,692
Low Income	172,763	0	172,763	366,784	0	366,784
Other	2,758	0	2,758	2,801	0	2,801
<b>Total - Passenger Type</b>	<b>823,286</b>	<b>0</b>	<b>823,286</b>	<b>901,063</b>	<b>0</b>	<b>901,063</b>
<b>Trip Purpose - One Way</b>						
Medical	99,467	0	99,467	96,004	0	96,004
Employment	332,902	0	332,902	314,121	0	314,121
Education/Training/Daycare	237,534	0	237,534	183,077	0	183,077
Nutritional	33,378	0	33,378	30,515	0	30,515
Life-Sustaining/Other	120,005	0	120,005	277,346	0	277,346
<b>Total - Trip Purpose</b>	<b>823,286</b>	<b>0</b>	<b>823,286</b>	<b>901,063</b>	<b>0</b>	<b>901,063</b>
<b>Unduplicated Passenger Head Count (UDPHC)</b>						
UDPHC	8,020	0	8,020	7,577	0	7,577
<b>Total - UDPHC</b>	<b>8,020</b>	<b>0</b>	<b>8,020</b>	<b>7,577</b>	<b>0</b>	<b>7,577</b>
<b>Unmet &amp; No Shows</b>						
Unmet Trip Requests	0	N/A	0	0	N/A	0
No Shows	2,228	N/A	2,228	22,450	N/A	22,450
<b>Customer Feedback</b>						
Complaints	1,757	N/A	1,757	1,258	N/A	1,258
Commendations	446	N/A	446	1,421	N/A	1,421



## CTC Vehicles & Drivers

County: Palm Beach

CTC Status: Submitted

CTC Organization: Palm Beach County

Fiscal Year: 07/01/2021 - 06/30/2022

CTD Status: Under Review

	Selected Reporting Period			Previous Reporting Period		
	CTC & Transportation Operators	Coordination Contractors	Total	CTC & Transportation Operators	Coordination Contractors	Total
<b>Vehicle Miles</b>						
Deviated Fixed Route Miles	0	N/A	0	0	N/A	0
Complementary ADA Service Miles	8,426,857	N/A	8,426,857	7,996,471	N/A	7,996,471
Paratransit Miles	1,492,642	0	1,492,642	1,192,789	0	1,192,789
Transportation Network Companies (TNC) Miles	0	N/A	0	0	N/A	0
Taxi Miles	0	N/A	0	0	N/A	0
School Board (School Bus) Miles	0	N/A	0	0	N/A	0
Volunteers Miles	0	N/A	0	0	N/A	0
<b>Total - Vehicle Miles</b>	<b>9,919,499</b>	<b>0</b>	<b>9,919,499</b>	<b>9,189,260</b>	<b>0</b>	<b>9,189,260</b>
<b>Roadcalls &amp; Accidents</b>						
Roadcalls	552	0	552	1,044	0	1,044
Chargeable Accidents	112	0	112	95	0	95
<b>Vehicle Inventory</b>						
Total Number of Vehicles	310	0	310	331	0	331
Number of Wheelchair Accessible Vehicles	252	0	252	302	0	302
<b>Drivers</b>						
Number of Full Time & Part Time Drivers	377	0	377	349	0	349
Number of Volunteer Drivers	0	0	0	0	0	0



## CTC Revenue Sources

County: Palm Beach

CTC Status: Submitted

CTC Organization: Palm Beach County

Fiscal Year: 07/01/2021 - 06/30/2022

CTD Status: Under Review

	Selected Reporting Period			Previous Reporting Period		
	CTC & Transportation Operators	Coordination Contractors	Total	CTC & Transportation Operators	Coordination Contractors	Total
<b>Revenue Sources</b>						
Agency for Health Care Administration (AHCA)	\$ 0	\$ 0	\$ 0	\$ 0	\$ 0	\$ 0
Agency for Persons with Disabilities (APD)	\$ 0	\$ 0	\$ 0	\$ 0	\$ 0	\$ 0
Dept of Economic Opportunity (DEO)	\$ 0	\$ 0	\$ 0	\$ 0	\$ 0	\$ 0
Dept of Children and Families (DCF)	\$ 0	\$ 0	\$ 0	\$ 0	\$ 0	\$ 0
Dept of Education (DOE)	\$ 0	\$ 0	\$ 0	\$ 0	\$ 0	\$ 0
Dept of Elder Affairs (DOEA)	\$ 0	\$ 0	\$ 0	\$ 0	\$ 0	\$ 0
Dept of Health (DOH)	\$ 0	\$ 0	\$ 0	\$ 0	\$ 0	\$ 0
Dept of Juvenile Justice (DJJ)	\$ 0	\$ 0	\$ 0	\$ 0	\$ 0	\$ 0
<b>Commission for the Transportation Disadvantaged (CTD)</b>						
Non-Sponsored Trip Program	\$ 3,380,664	N/A	\$ 3,380,664	\$ 2,848,195	N/A	\$ 2,848,195
Non-Sponsored Capital Equipment	\$ 0	N/A	\$ 0	\$ 0	N/A	\$ 0
Rural Capital Equipment	\$ 0	N/A	\$ 0	\$ 0	N/A	\$ 0
TD Other	\$ 0	N/A	\$ 0	\$ 0	N/A	\$ 0
<b>Department of Transportation (DOT)</b>						
49 USC 5307	\$ 0	\$ 0	\$ 0	\$ 0	\$ 0	\$ 0
49 USC 5310	\$ 0	\$ 0	\$ 0	\$ 0	\$ 0	\$ 0
49 USC 5311	\$ 0	\$ 0	\$ 0	\$ 0	\$ 0	\$ 0
49 USC 5311 (f)	\$ 0	\$ 0	\$ 0	\$ 0	\$ 0	\$ 0
Block Grant	\$ 0	\$ 0	\$ 0	\$ 0	\$ 0	\$ 0
Service Development	\$ 0	\$ 0	\$ 0	\$ 0	\$ 0	\$ 0
Commuter Assistance Program	\$ 0	\$ 0	\$ 0	\$ 0	\$ 0	\$ 0
Other DOT	\$ 0	\$ 0	\$ 0	\$ 0	\$ 0	\$ 0
<b>Local Government</b>						
School Board (School Bus)	\$ 0	N/A	\$ 0	\$ 0	N/A	\$ 0
County Cash	\$ 26,973,571	\$ 0	\$ 26,973,571	\$ 16,530,163	\$ 0	\$ 16,530,163
County In-Kind	\$ 0	\$ 0	\$ 0	\$ 0	\$ 0	\$ 0
City Cash	\$ 0	\$ 0	\$ 0	\$ 0	\$ 0	\$ 0
City In-Kind	\$ 0	\$ 0	\$ 0	\$ 0	\$ 0	\$ 0
Other Cash	\$ 0	\$ 0	\$ 0	\$ 0	\$ 0	\$ 0
Other In-Kind	\$ 0	\$ 0	\$ 0	\$ 0	\$ 0	\$ 0
<b>Local Non-Government</b>						
Farebox	\$ 3,109,845	\$ 0	\$ 3,109,845	\$ 1,516,569	\$ 0	\$ 1,516,569
Donations/Contributions	\$ 0	\$ 0	\$ 0	\$ 0	\$ 0	\$ 0
In-Kind Services	\$ 0	\$ 0	\$ 0	\$ 0	\$ 0	\$ 0
Other Non-Government	\$ 0	\$ 0	\$ 0	\$ 0	\$ 0	\$ 0
<b>Other Federal &amp; State Programs</b>						
Other Federal Programs	\$ 0	\$ 0	\$ 0	\$ 3,603,541	\$ 0	\$ 3,603,541
Other State Programs	\$ 0	\$ 0	\$ 0	\$ 0	\$ 0	\$ 0
<b>Total - Revenue Sources</b>	<b>\$ 33,464,080</b>	<b>\$ 0</b>	<b>\$ 33,464,080</b>	<b>\$ 24,498,468</b>	<b>\$ 0</b>	<b>\$ 24,498,468</b>



## CTC Expense Sources

County: Palm Beach

CTC Status: Submitted

CTC Organization: Palm Beach County

Fiscal Year: 07/01/2021 - 06/30/2022

CTD Status: Under Review

	Selected Reporting Period			Previous Reporting Period		
	CTC & Transportation Operators	Coordination Contractors	Total	CTC & Transportation Operators	Coordination Contractors	Total
<b>Expense Sources</b>						
Labor	\$ 3,206,712	\$ 0	\$ 3,206,712	\$ 3,348,792	\$ 0	\$ 3,348,792
Fringe Benefits	\$ 1,691,520	\$ 0	\$ 1,691,520	\$ 2,019,878	\$ 0	\$ 2,019,878
Services	\$ 0	\$ 0	\$ 0	\$ 39,347	\$ 0	\$ 39,347
Materials & Supplies Consumed	\$ 9,447	\$ 0	\$ 9,447	\$ 23,249	\$ 0	\$ 23,249
Utilities	\$ 207,202	\$ 0	\$ 207,202	\$ 219,347	\$ 0	\$ 219,347
Casualty & Liability	\$ 0	\$ 0	\$ 0	\$ 0	\$ 0	\$ 0
Taxes	\$ 0	\$ 0	\$ 0	\$ 0	\$ 0	\$ 0
Miscellaneous	\$ 343,406	\$ 0	\$ 343,406	\$ 165,281	\$ 0	\$ 165,281
Interest	\$ 0	\$ 0	\$ 0	\$ 0	\$ 0	\$ 0
Leases & Rentals	\$ 0	\$ 0	\$ 0	\$ 0	\$ 0	\$ 0
Capital Purchases	\$ 0	\$ 0	\$ 0	\$ 0	\$ 0	\$ 0
Contributed Services	\$ 0	\$ 0	\$ 0	\$ 0	\$ 0	\$ 0
Allocated Indirect Expenses	\$ 0	\$ 0	\$ 0	\$ 0	\$ 0	\$ 0
<b>Purchased Transportation Services</b>						
Bus Pass	\$ 408,217	N/A	\$ 408,217	\$ 579,803	N/A	\$ 579,803
School Board (School Bus)	\$ 0	N/A	\$ 0	\$ 0	N/A	\$ 0
Transportation Network Companies (TNC)	\$ 0	N/A	\$ 0	\$ 0	N/A	\$ 0
Taxi	\$ 0	N/A	\$ 0	\$ 0	N/A	\$ 0
Contracted Operator	\$ 27,597,576	N/A	\$ 27,597,576	\$ 29,005,945	N/A	\$ 29,005,945
<b>Total - Expense Sources</b>	<b>\$ 33,464,080</b>	<b>\$ 0</b>	<b>\$ 33,464,080</b>	<b>\$ 35,401,642</b>	<b>\$ 0</b>	<b>\$ 35,401,642</b>

County: Palm Beach  
 CTC: Palm Beach County  
 Contact: Lou Ferri  
 50 South Military Trail  
 West Palm Beach, FL 33415  
 561-812-5350

Email: LFerri@pbcgov.org

Demographics	Number
Total County Population	0
Unduplicated Head Count	8,020



<b>Trips By Type of Service</b>	<b>2020</b>	<b>2021</b>	<b>2022</b>
Fixed Route (FR)	603,792	355,804	158,594
Deviated FR	0	0	0
Complementary ADA	592,415	474,394	560,221
Paratransit	150,719	70,865	104,471
TNC	0	0	0
Taxi	0	0	0
School Board (School Bus)	0	0	0
Volunteers	0	0	0
<b>TOTAL TRIPS</b>	<b>1,346,926</b>	<b>901,063</b>	<b>823,286</b>

<b>Passenger Trips By Trip Purpose</b>			
Medical	108,962	96,004	99,467
Employment	458,872	314,121	332,902
Ed/Train/DayCare	567,026	183,077	237,534
Nutritional	73,228	30,515	33,378
Life-Sustaining/Other	138,838	277,346	120,005
<b>TOTAL TRIPS</b>	<b>1,346,926</b>	<b>901,063</b>	<b>823,286</b>

<b>Passenger Trips By Revenue Source</b>			
CTD	89,095	70,865	179,860
AHCA	0	0	0
APD	0	0	0
DOEA	46,066	0	0
DOE	0	0	0
Other	1,211,765	830,198	643,426
<b>TOTAL TRIPS</b>	<b>1,346,926</b>	<b>901,063</b>	<b>823,286</b>

<b>Trips by Provider Type</b>			
CTC	603,792	355,804	158,594
Transportation Operator	743,134	545,259	664,692
Coordination Contractor	0	0	0
<b>TOTAL TRIPS</b>	<b>1,346,926</b>	<b>901,063</b>	<b>823,286</b>

<b>Vehicle Data</b>	<b>2020</b>	<b>2021</b>	<b>2022</b>
Vehicle Miles	10,672,223	9,189,260	9,919,499
Roadcalls	1,597	1,044	552
Accidents	118	95	112
Vehicles	292	331	310
Drivers	436	349	377

<b>Financial and General Data</b>			
Expenses	\$40,344,925	\$35,401,642	\$33,464,080
Revenues	\$36,311,641	\$24,498,468	\$33,464,080
Commendations	1,320	1,421	446
Complaints	2,156	1,258	1,757
Passenger No-Shows	4,040	22,450	2,228
Unmet Trip Requests	0	0	0

<b>Performance Measures</b>			
Accidents per 100,000 Miles	1.11	1.03	1.13
Miles between Roadcalls	6,683	8,802	17,970
Avg. Trips per Passenger	128.66	118.92	102.65
Cost per Trip	\$29.95	\$39.29	\$40.65
Cost per Paratransit Trip	\$53.63	\$63.86	\$49.73
Cost per Total Mile	\$3.78	\$3.85	\$3.37
Cost per Paratransit Mile	\$3.73	\$3.79	\$3.33

# 3.A



1

## Annual Expenditure Report (AER)

- The AER is a document that details all direct federal and local government funds spent on transportation disadvantaged trips
- Does not include state funds, but does include local match money and number of trips
- Numbers are for FY23 (July 1, 2022 – June 30, 2023)

**COMMISSION FOR THE TRANSPORTATION DISADVANTAGED  
ACTUAL EXPENDITURE REPORT FORM**  
(One form for each county)  
Do not report funds from state agency sources

COUNTY: Palm Beach  
DUE: September 15, 2022


Coordinated Transportation			
ACTUAL PRIOR YEAR		Direct Federal Funding	
Local Funding		Expenditures	
Expenditures	# of Trips, Operating Subsidy or Capital	Expenditures	# of Trips, Operating Subsidy or Capital
\$33,577,203	744,623	\$0	0

Transportation Alternatives			
ACTUAL PRIOR YEAR		Direct Federal Funding	
Local Funding		Expenditures	
Expenditures	# of Trips, Operating Subsidy or Capital	Expenditures	# of Trips, Operating Subsidy or Capital
N/A	N/A	N/A	N/A

Other			
ACTUAL PRIOR YEAR		Direct Federal Funding	
Local Funding		Expenditures	
Expenditures	# of Trips, Operating Subsidy or Capital	Expenditures	# of Trips, Operating Subsidy or Capital
N/A	N/A	N/A	N/A

2






## Coordinated Transportation

Local Funding		Direct Federal Funding	
Expenditures	# of Trips, Operating Subsidy or Capital	Expenditures	# of Trips, Operating Subsidy or Capital
\$33,577,203	744,623	\$0	0

3



## Transportation Alternatives & Other

Local Funding		Direct Federal Funding	
Expenditures	# of Trips, Operating Subsidy or Capital	Expenditures	# of Trips, Operating Subsidy or Capital
N/A	N/A	N/A	N/A

4





**COMMISSION FOR THE TRANSPORTATION DISADVANTAGED  
ACTUAL EXPENDITURE REPORT FORM**  
(One form for each county)  
Do not report funds from state agency sources)

**COUNTY:** Palm Beach  
**DUE:** September 15, 2022

Coordinated Transportation			
ACTUAL PRIOR YEAR			
Local Funding		Direct Federal Funding	
Expenditures	# of Trips, Operating Subsidy or Capital	Expenditures	# of Trips, Operating Subsidy or Capital
\$33,577,203	744,623	\$0	0

Transportation Alternatives			
ACTUAL PRIOR YEAR			
Local Funding		Direct Federal Funding	
Expenditures	# of Trips, Operating Subsidy or Capital	Expenditures	# of Trips, Operating Subsidy or Capital
N/A	N/A	N/A	N/A

Other			
ACTUAL PRIOR YEAR			
Local Funding		Direct Federal Funding	
Expenditures	# of Trips, Operating Subsidy or Capital	Expenditures	# of Trips, Operating Subsidy or Capital
N/A	N/A	N/A	N/A

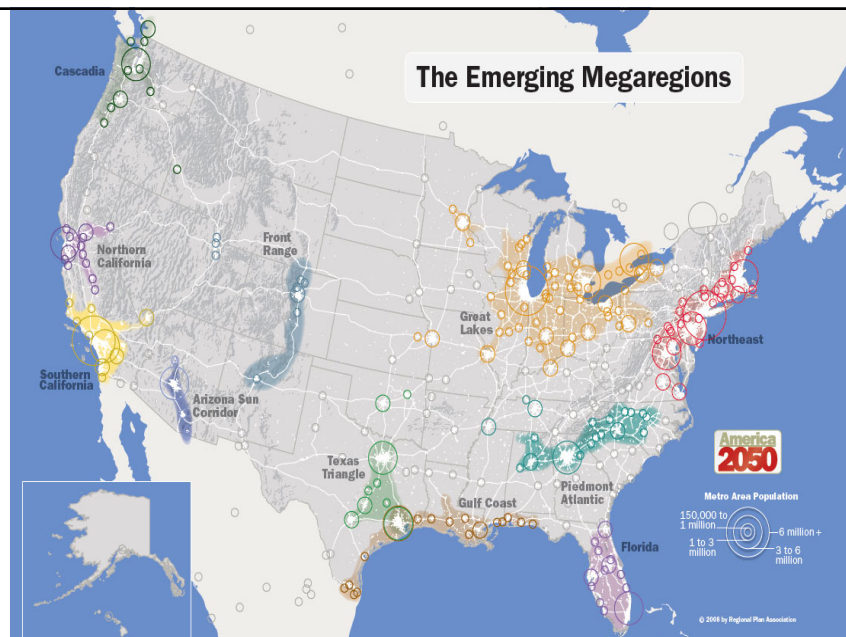
# 3.C

## It's All About Jobs

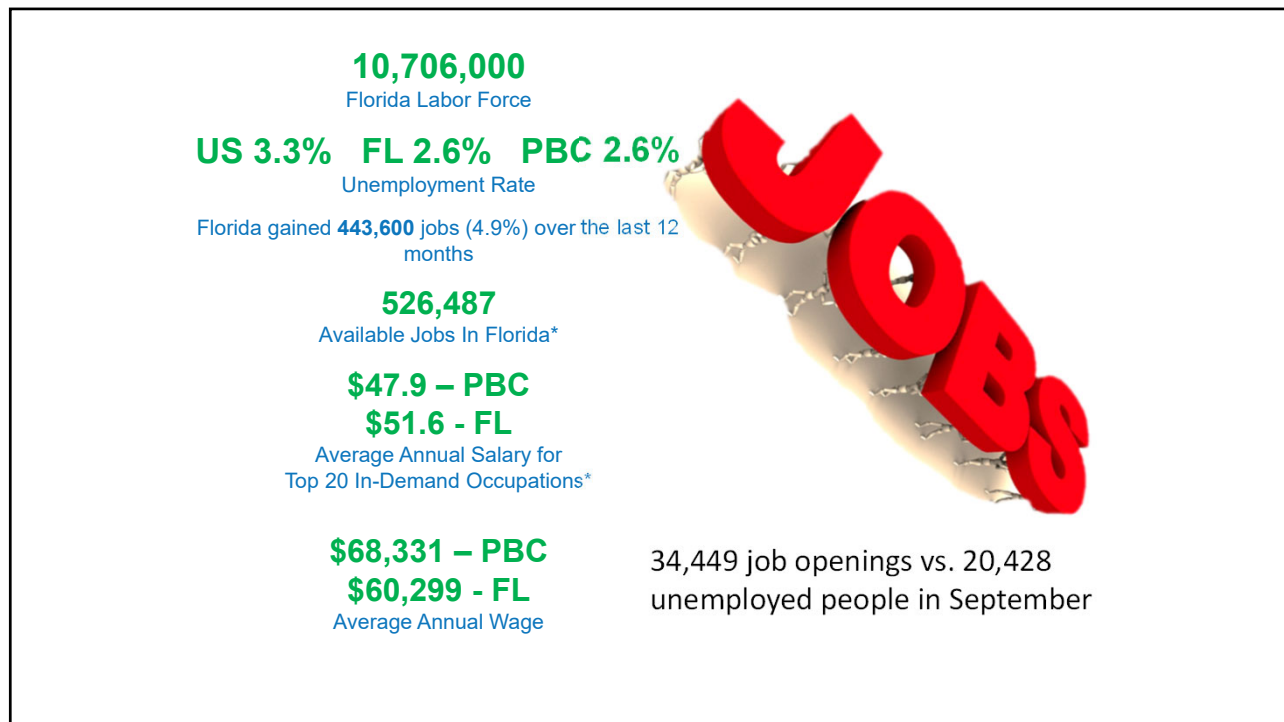


**Michael Corbit**  
Vice President

1



2

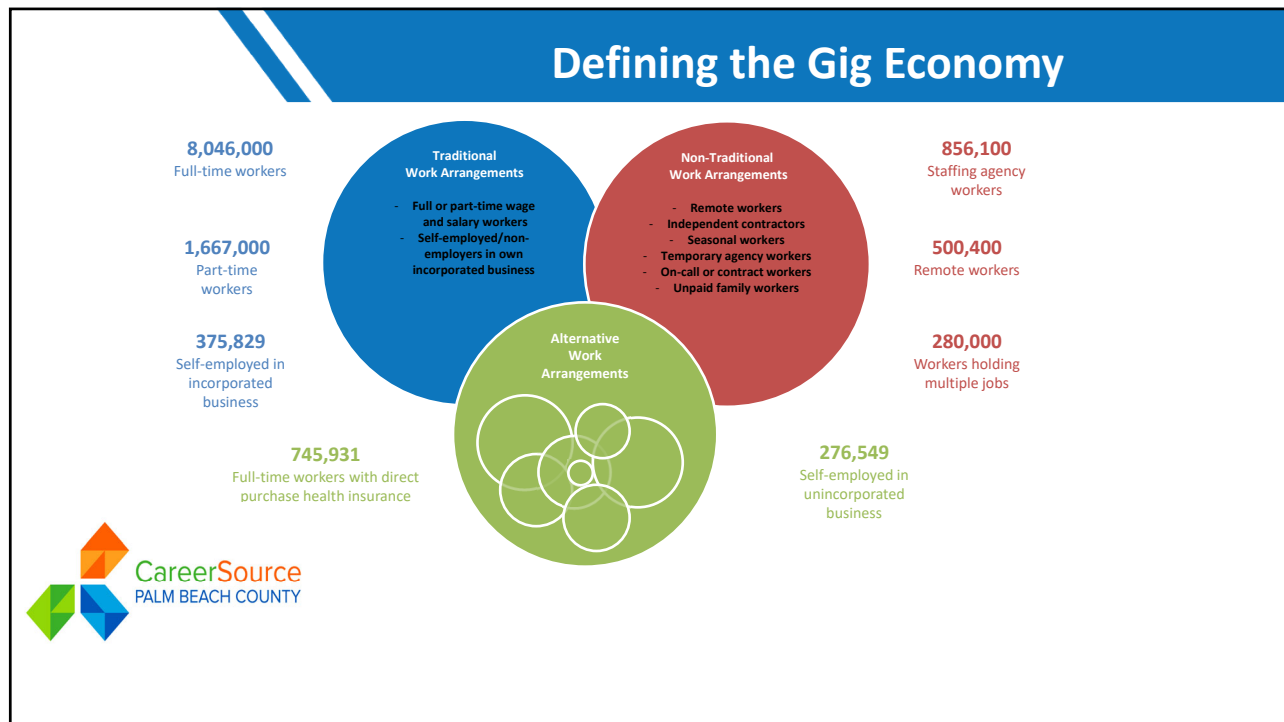


3

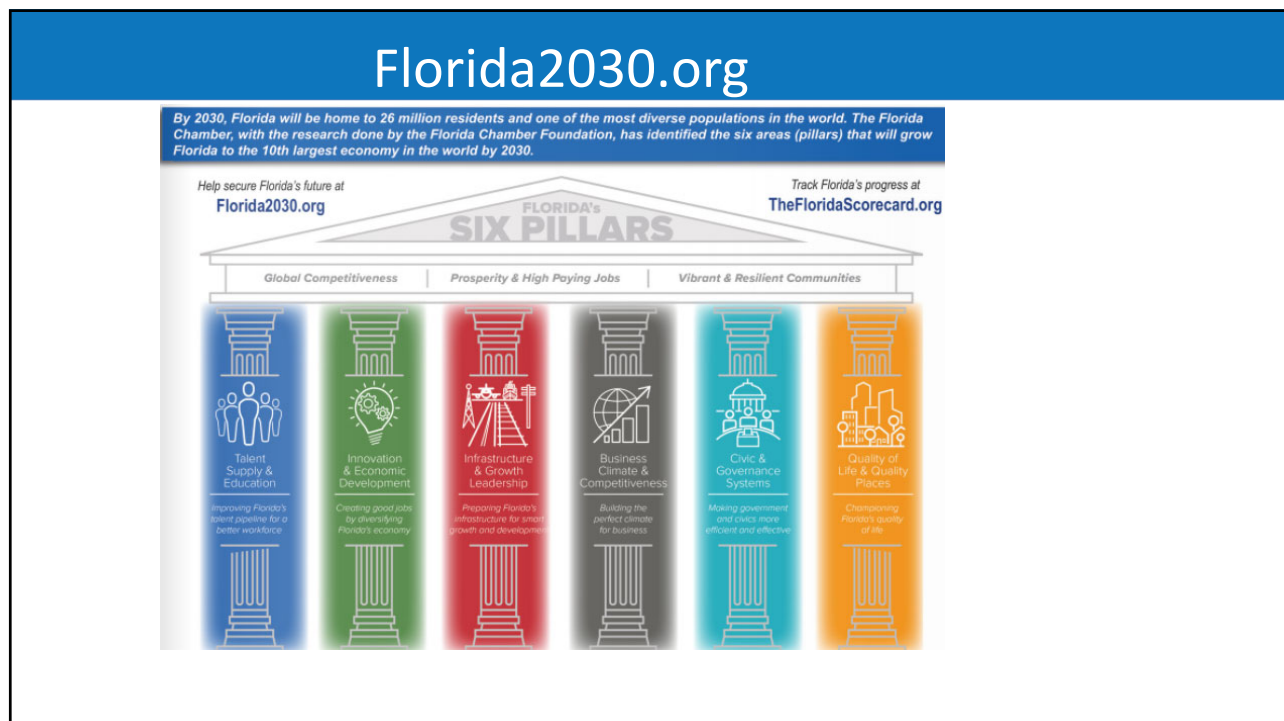
Job Gains		
• By the numbers, over-the-year job gains in Palm Beach County were:		
Industry	Change	Total jobs
• Leisure/hospitality	+11,100	92,100
• Education/health services	+7,100	109,700
• Trade/transportation/utilities	+4,500	121,300
• Other services	+4,500 jobs	35,000
• Construction	+1,000 jobs	40,300
• Manufacturing	+1,100 jobs	21,500
• Financial activities	+800 jobs	46,900
• Government	+800 jobs	63,800
• Professional/business services	+300s	125,800
• Information	unchanged	10,600



4



5



6

## Training Grants – Incentive Programs

- **On-the-Job Training (OJT)**
  - Train specific set of skills at the worksite
  - New employee
- **Customized Training (CT)**
  - Additional training to upgrade skills
  - Obtain national or industry certificate
- **Incumbent Worker Training (IWT)**
  - State funding for customized training
  - Existing for-profit businesses



7

## Veterans' Services

- **Connecting veterans to civilian career opportunities**
  - Recognized among nation's top 10 most successful veterans employment programs
  - More than doubled veterans' employment 2017-2018
  - Strong relationships with business, social service and education sectors



8

## Youth and Young Adult Programs



**Business &  
Entrepreneurship**

**Hospitality**

**Trades**

**Healthcare**

- CareerSource has specialized services for jobseekers between the ages of 17 to 24. Jobseekers:
  - Improve skills to become job ready
  - Explore educational requirements for careers, vocations, and apprenticeships
  - Work based experiences to include internships and On-the-Job Training



9

## Disability Services Department

Assisting individuals with disabilities to find and maintain meaningful work.

Department Branches:

- Ticket To Work
- Disabilities Services Support
- Community Work Incentive Coordinator (CWIC)
- Hospitality Training Program of Palm Beaches
- REACH Conference
- Project Impact
- Job Search Assistance
- Job Coaching (Short-term)



10




## Prepare Re-entry Program

- Pre-Release Employment Preparation and Re-entry Engagement program
- Provides inmates employment services during and after incarceration
- Career planning and counseling
- Case management and assessment
- Resume preparation/writing
- Peer support groups
- Interviewing skills








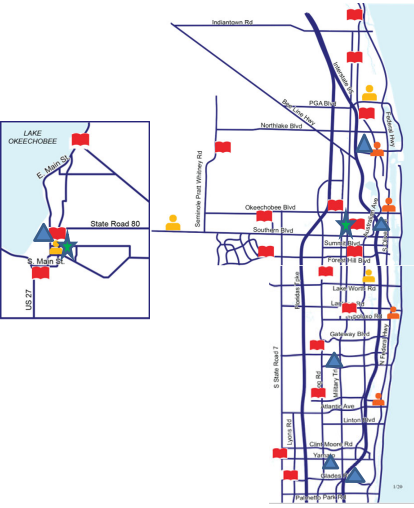
11




**CareerSource**  
PALM BEACH COUNTY


### CSPBC Library Footprint

 2 Centers  
 4 City Libraries with CSPBC Staff  
 17 Libraries with trained staff  
 CSPBC recruiters at PBSC  
 More University, Adult Education campuses coming in the Fall '21





**PAYCHECKS FOR PATRIOTS JOB FAIR**  
WEDNESDAY, NOVEMBER 9TH 9AM-1PM  
LOCATION: Palm Beach County Courthouse  
TO REGISTER: CLICK HERE  
SCAN ME



**Healthcare Career Expo**  
September 21, 2022  
IN-PERSON EVENT  
VIRTUAL EVENT

12

## HEALTHCARE CAREER PATHS

**810,381 jobs statewide**

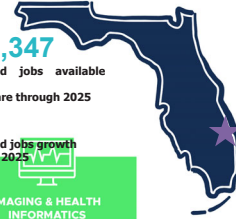
- Key sub-baccalaureate opportunities:  
Medical assistants | Licensed practical nurses | Registered nurses
- Greatest projected long-term skills gaps:  
Medical records and health information technicians

**134,347**

Projected jobs available  
for healthcare through 2025

**8%**

Projected jobs growth  
through 2025

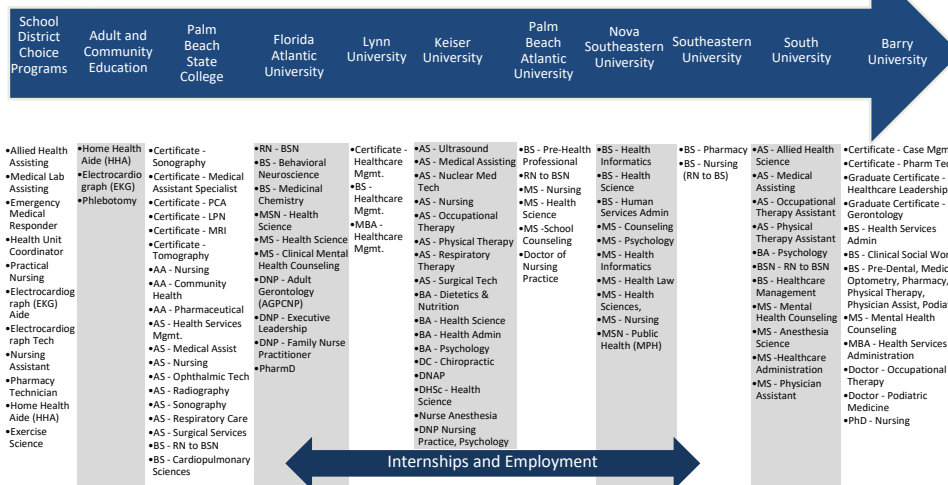


	PATIENT CARE NURSING	MEDICAL ADMINISTRATION & OPERATIONS	IMAGING & HEALTH INFORMATICS
<b>HIGH SCHOOL or GED</b>	CERTIFIED NURSING ASSISTANT HOME HEALTH AIDE \$10.00-\$15.15 HOURLY RATE	RECEPTIONIST CUSTOMER SERVICE REPS \$10.00-\$14.00 HOURLY RATE	MEDICAL BILLING \$12.00-\$20.00 HOURLY RATE
<b>CERTIFICATE or DIPLOMA (1-2 years)</b>	LICENSED PRACTICAL NURSE MESSAGE THERAPISTS EMERGENCY MEDICAL TECHNOLOGISTS \$15.00-\$23.00 HOURLY RATE	MEDICAL ADMINISTRATIVE ASSISTANT \$18.00-\$22.00 HOURLY RATE	MEDICAL RECORDS HEALTH INFORMATION TECHNICIANS \$14.00-\$30.00 HOURLY RATE
<b>ASSOCIATE DEGREE (2 years)</b>	REGISTERED NURSES \$22.00-\$37.00 HOURLY RATE	BIOMEDICAL TECHNICIAN \$17.00-\$25.00 HOURLY RATE	RADIOLOGIC TECHNOLOGISTS DIAGNOSTIC MEDICAL SONOGRAPHERS \$16.00-\$38.00 HOURLY RATE
<b>BA / BS or POST-GRADUATE (4 years+)</b>	NURSE PRACTITIONERS NURSE ANESTHETISTS \$49.00-\$58.00 HOURLY RATE	HEALTHCARE ADMINISTRATION \$25.00-\$47.00 HOURLY RATE	CLINICAL LAB SCIENTIST \$25.00-\$37.00 HOURLY RATE

13



### Learner Pathway for Healthcare Careers



14

# New Projects



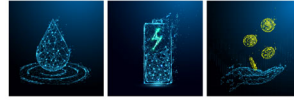
Project Rack



Project Cypress

## A New Approach to Air Conditioning

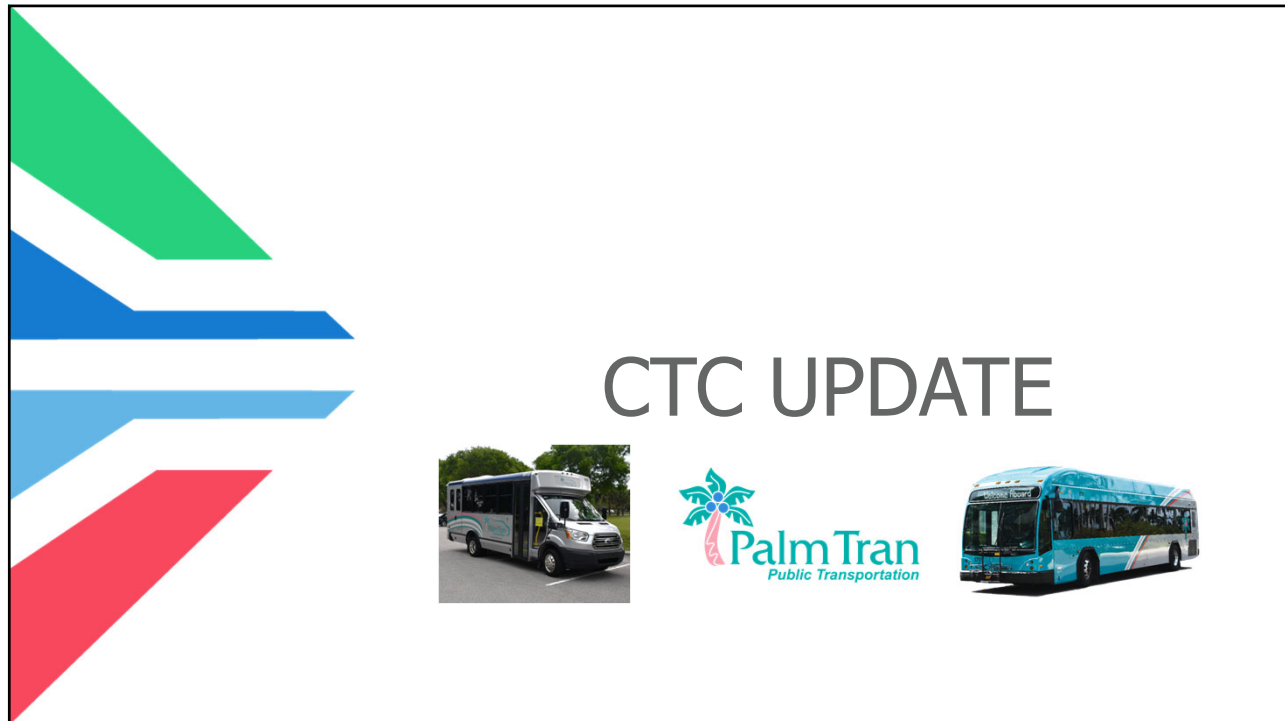
At Blue Frontier, our mission is to harness leading-edge sustainable, sustainable, and innovative ideas. For this, we recently achieved this goal by the commercialization of a revolutionary air conditioning technology. Blue Frontier's V2 system combines three core ideas: cooling with liquid refrigerant, phase change to reduce electricity usage by up to 90% and less. The system's technology and innovation are leading to the delivery of better air, lower cost, and lower carbon footprint cooling when electricity is dirty or costly. These features make our system to solve an array of today's urgent sustainability problems. Thank you Blue Frontier for your leadership. Your technology is the key to solving all of tomorrow's sustainable needs.




Liquid Refrigerants and the Cooling Process Liquid Refrigerants in Breakthrough Storage Blue Frontier's Impact on Reducing CO2



# 3.D



1

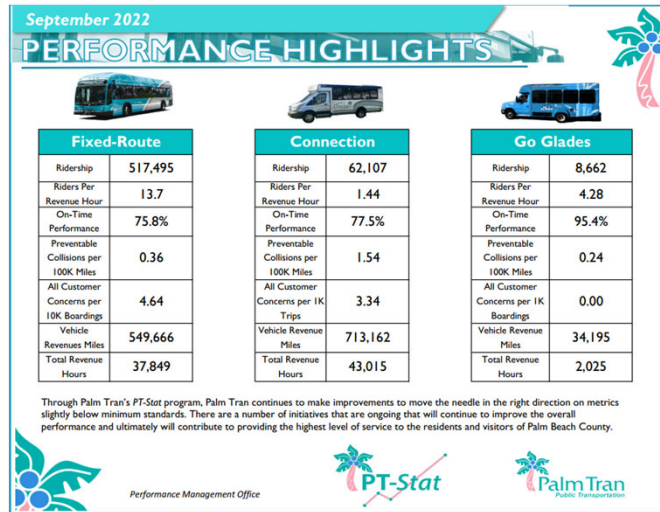


## Palm Tran Service Update

- Palm Tran ridership across all modes of services (Fixed-Route, Connection, Go Glades) in September 2022 increased 2.8% compared to the same period in 2021. The current overall impact of COVID-19 to Palm Tran public transit services is estimated at -30.4%
- On Tuesday, September 20, the Go Glades service reported the highest daily ridership since the service started in December 2018 at 398 passengers
- Both Fixed-Route and Connection are still experiencing challenges with driver shortages
- Connection Request for Proposal for new providers has been postponed until 2023

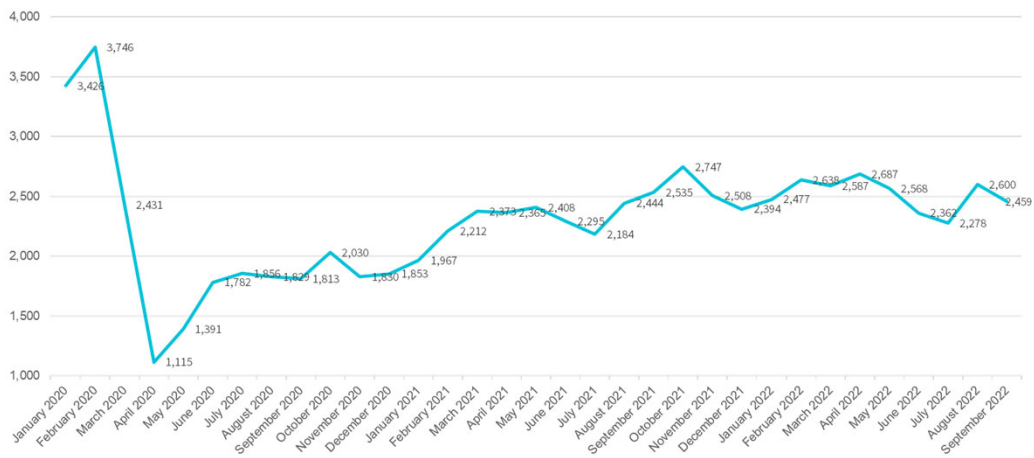
2

# September 2022 Dashboard Summary




3

## Palm Tran Connection Average Weekday Ridership



4

 TD Ridership and Complaint Report			
Month	TD Ridership	Raw Complaints	Valid
August	7,755	12	7
September	7,654	5	2
October	8,784	10	2
Valid complaints: Late Drop off (3), Wheelchair securement (2), Vehicle No-show (2), Other (2), Unsafe driving (1), Damaged Property (1)			



**PALM BEACH**  
Transportation  
Planning Agency

## 2023 TPA Governing Board, Advisory Committee & Coordinating Board Meeting Dates

Meetings held at 301 Datura Street, West Palm Beach, FL 33401

	Jan	Feb	Mar	Apr	May	June	July	Aug	Sep	Oct	Nov	Dec
<b>Governing Board</b> 3 <sup>rd</sup> Thursday of most months at 9:00 a.m.		16	16	20	18	15	20		21	19		14*
<b>Technical Advisory Committee (TAC)</b> 1 <sup>st</sup> Wednesday of most months at 9:00 a.m.		1	1	5	3	7	5		6	4		6
<b>Citizen's Advisory Committee (CAC)</b> 1 <sup>st</sup> Wednesday of most months at 1:30 p.m.		1	1	5	3	7	5		6	4		6
<b>Vision Zero Advisory Committee (VZAC)</b> 1 <sup>st</sup> Thursday of most months at 9:00 a.m.		2	2	6	4	8*	6		7	5		7
<b>Transportation Disadvantaged Local Coordinating Board (TDLCB)</b> 2 <sup>nd</sup> month of each quarter at 2:00 p.m.		22			24			23			15	

Shaded = No Meeting

\* Second Thursday