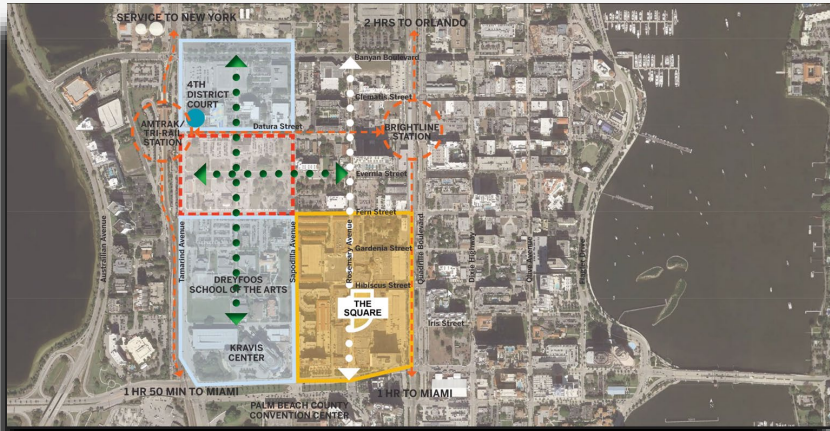



Palm Beach TPA

Downtown WPB Intermodal Coordination Workshop Series



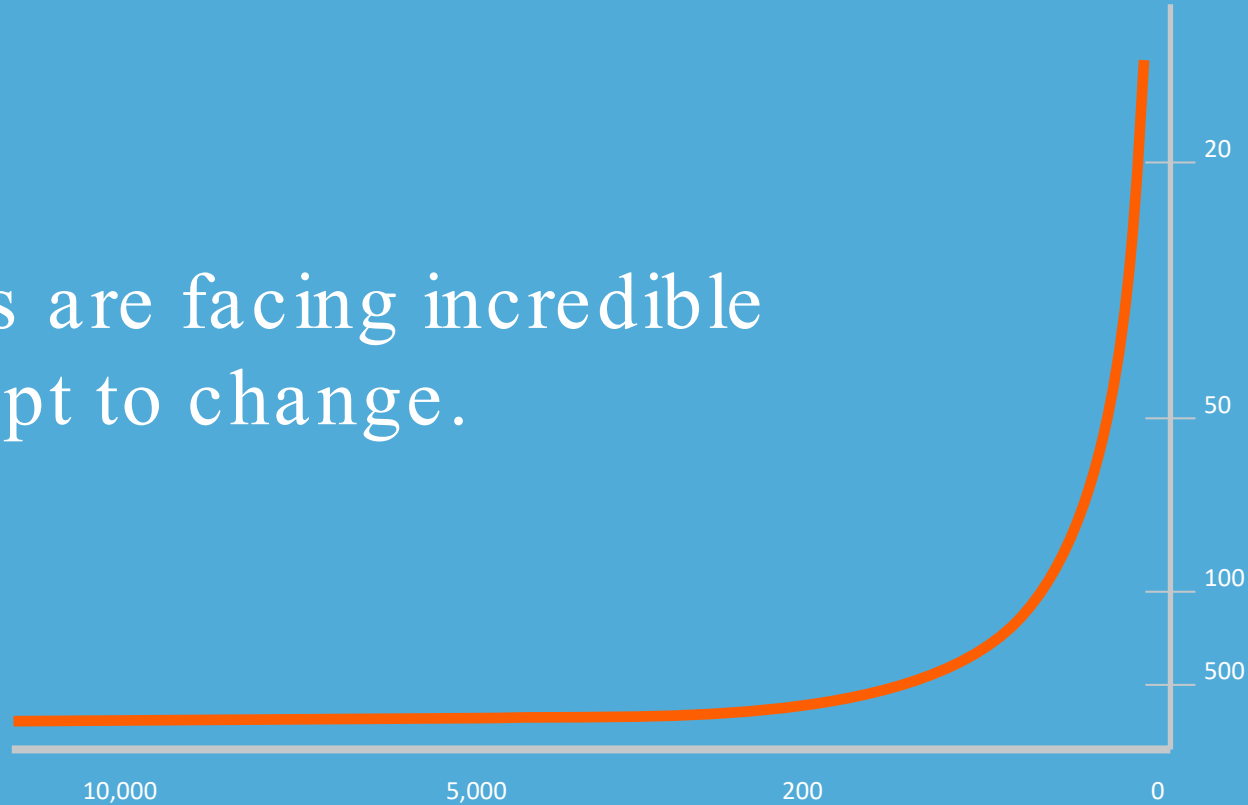
An aerial photograph of a city street grid. Several buildings have green roofs, some of which are landscaped with trees and grass. A large, rectangular green roof with a baseball field is prominent on the right side. The text 'THE STATE OF THE WORLD/U.S.' is overlaid on the left side of the image.

THE STATE OF THE WORLD/U.S.



Macro U.S. Challenges pre-COVID

Cities & Regions are facing incredible pressure to adapt to change.



Americans
without access to
fixed or wireless
broadband

42M

BroadbandNow Research, Feb 2020

Of jobs could
be automated
in the future.

44%

UK Home Affairs Select Committee Study,
August 2018

Value output
decline for every
degree above
the avg. temp.

-3%

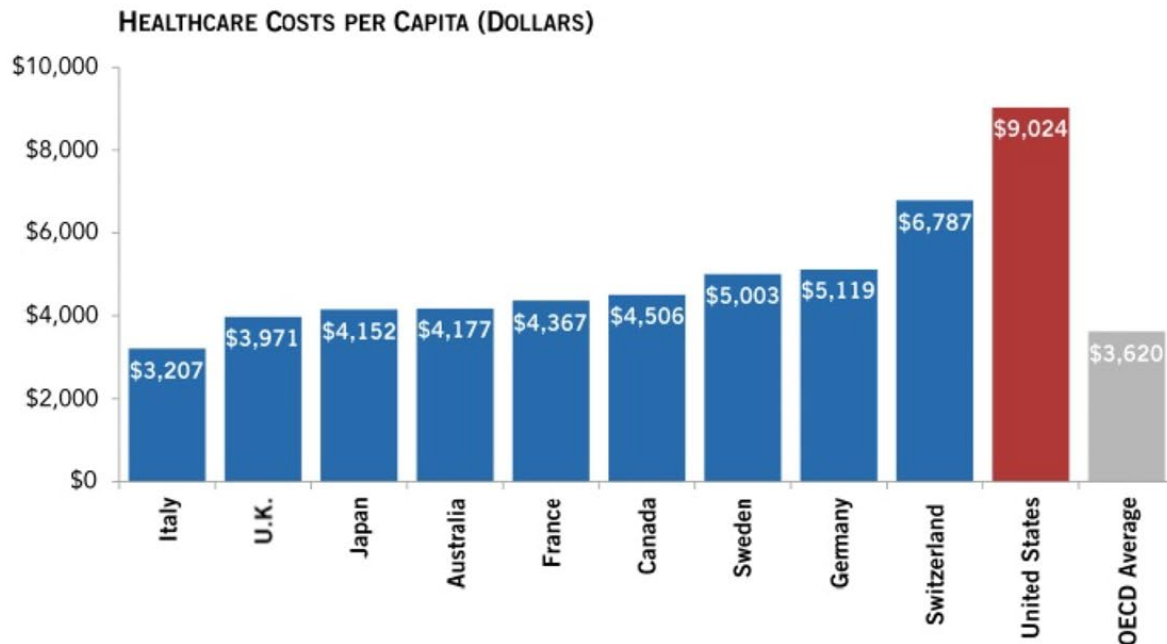
Energy Policy Inst., Univ. of Chicago, Aug. 2018

U.S. ranking as
an innovative
economy

Bloomberg Innovation Index, 2020

9th

United States per capita healthcare spending is more than twice the average of other developed countries



SOURCE: Organization for Economic Cooperation and Development, OECD Health Statistics 2016, June 2016. Compiled by PGPF.

NOTE: Data are for 2014 or latest available. Chart uses purchasing power parities to convert data into U.S. dollars.

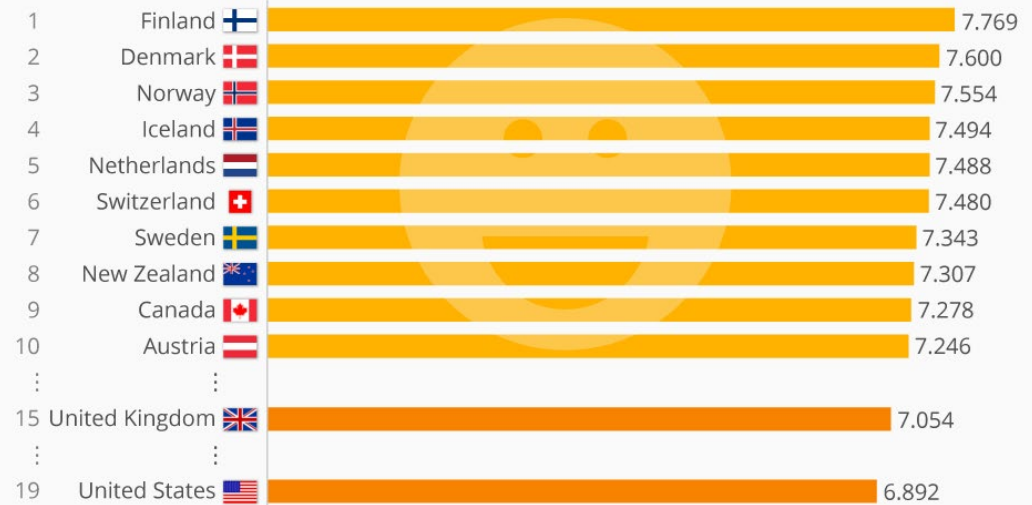
© 2016 Peter G. Peterson Foundation

PGPF.ORG

U.S. ranking
for Happiness:
19th

The Happiest Countries in the World

Ranking by highest index value*



* Based on: GDP per capita, social protection, health and life expectancy, freedom of choice, generosity, corruption perception
Survey Period: 2016-2018

A woman with dark hair is driving a dark-colored car through deep floodwaters. The water is murky and reflects the sky. In the background, there are buildings, including a yellow one with a sign that says "Taco Man".

Climate Shocks May Cost U.S. \$1 Billion a Day

By **Joe Ryan**

September 27, 2017, 11:00 AM CDT

Climate change Climate Consensus - the 97%

New study finds that climate change costs will hit Trump country hardest

In the USA, the southeastern states are most vulnerable to the costly impacts from human-caused climate change

AIR POLLUTION TAKING ITS TOLL

3 million deaths

attributable to ambient air pollution

Ambient air pollution: A global
assessment of exposure and burden
of disease

4.3 million deaths

attributable to household air pollution

Mortality from household air
pollution 2012 - summary of
results.
pdf, 558kb

3000 cities and towns

worldwide are reporting air pollution levels

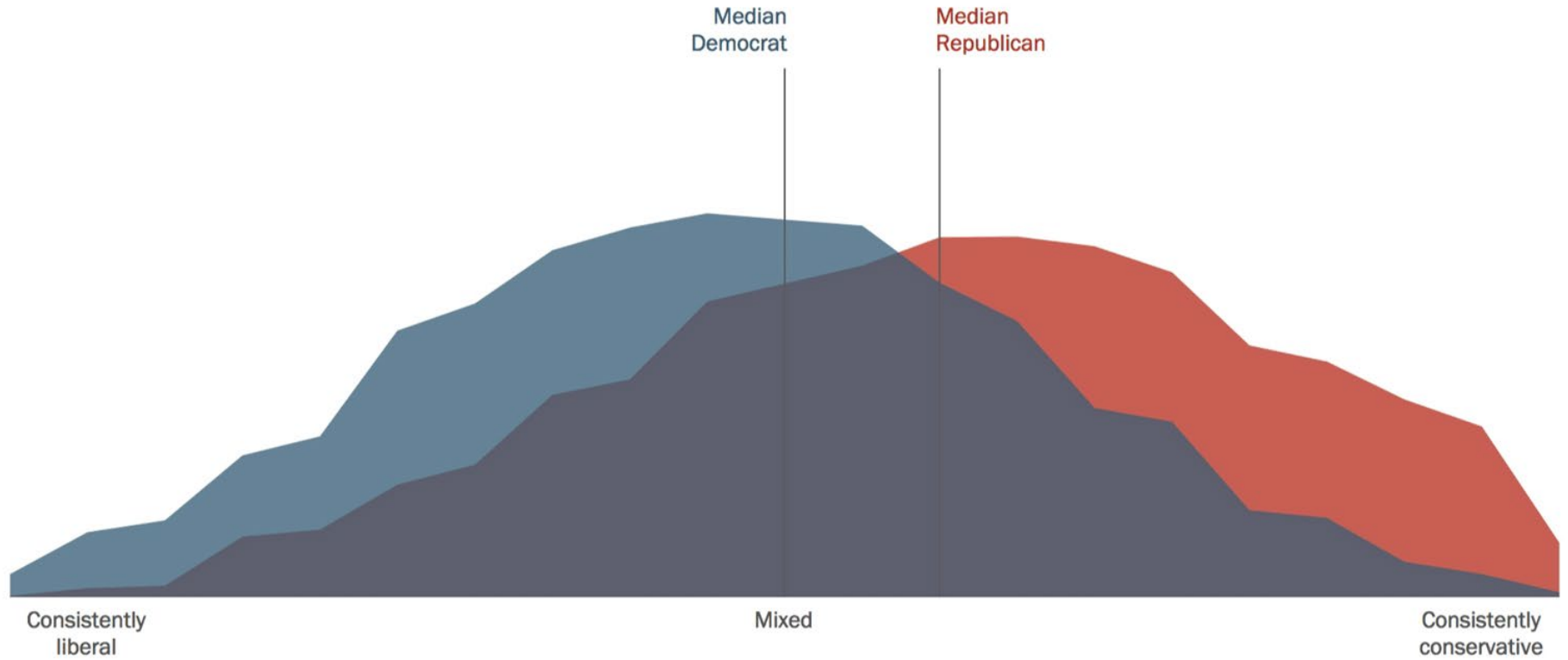
Air quality in cities database –
summary of results
pdf, 689kb

← NEWS

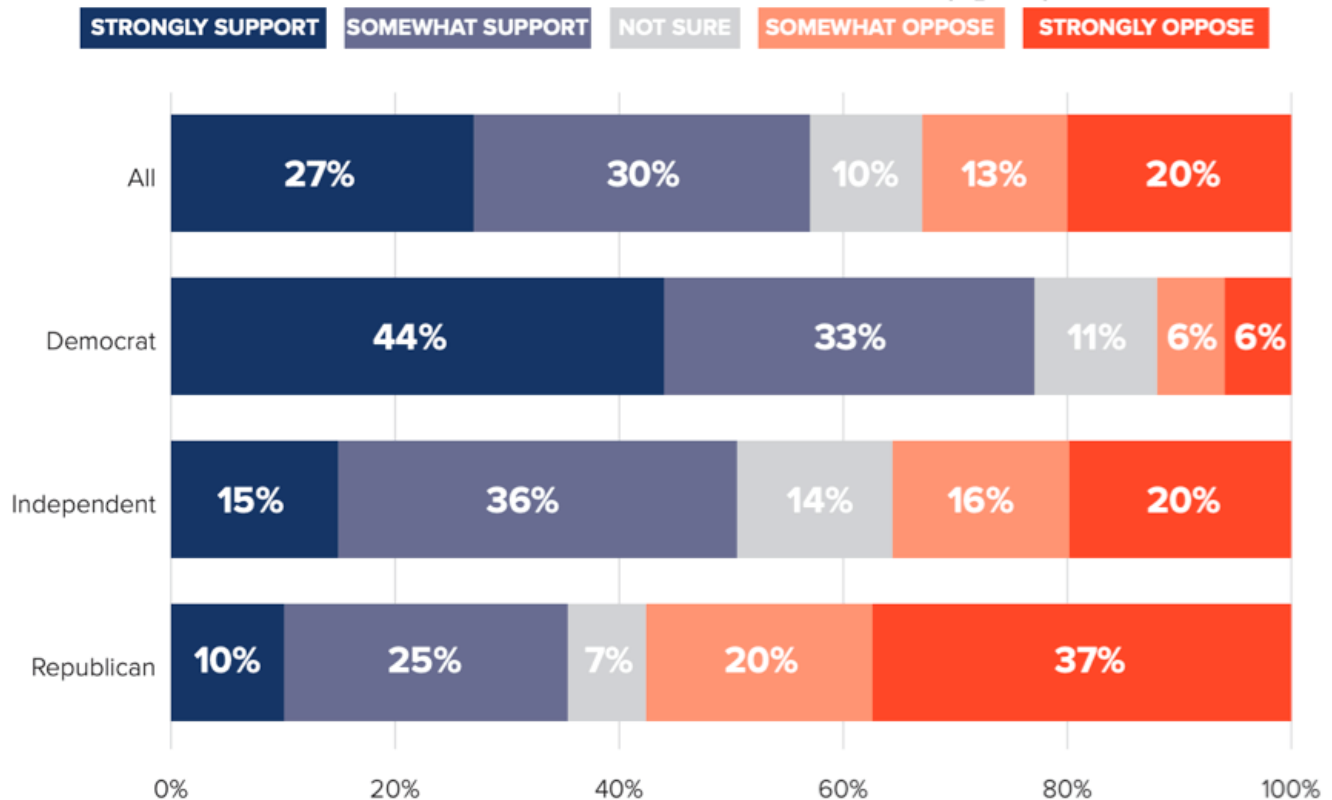
USDOT Releases New Data Showing That Road Fatalities Spiked in First Half of 2021

Secretary Buttigieg calls rising traffic deaths a crisis and calls for cooperation among all levels of government, industry, and advocacy to change course

1994



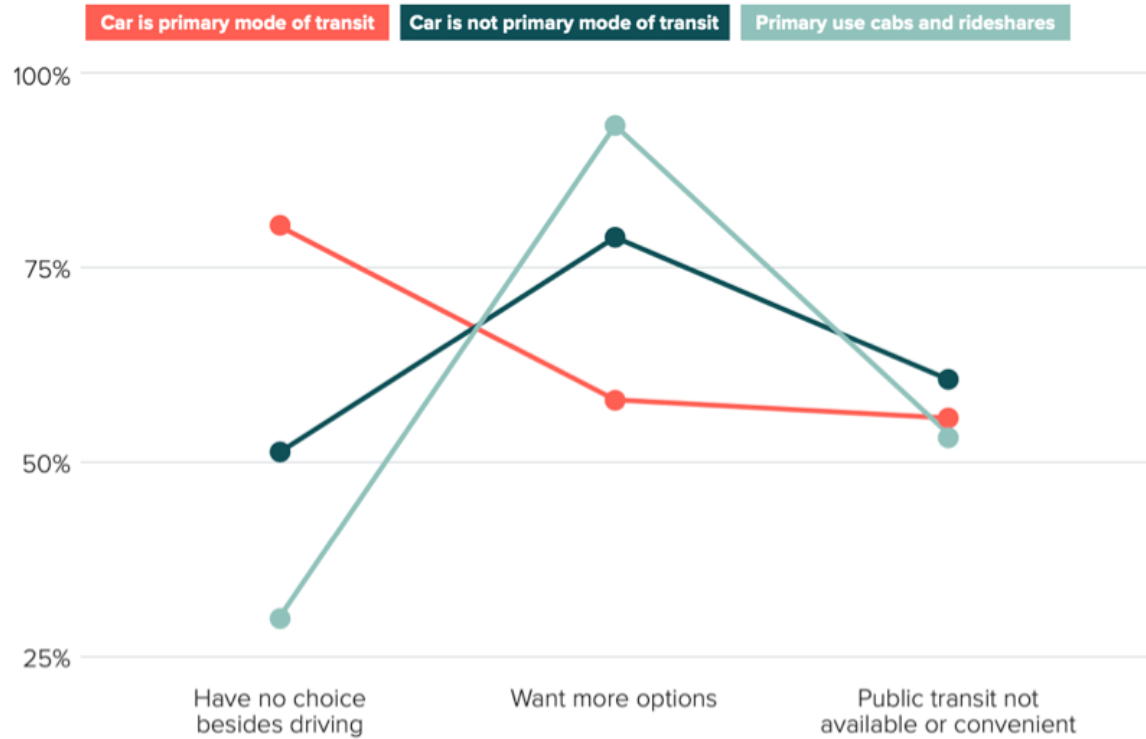
SUPPORT FOR INCREASING FUNDING TO PUBLIC TRANSIT EVEN WITH INCREASES IN TAXES OR FEES by party ID



DATA FOR **PROGRESS**

DRIVING AND PUBLIC TRANSIT OPTIONS

Among frequent drivers and rideshare users

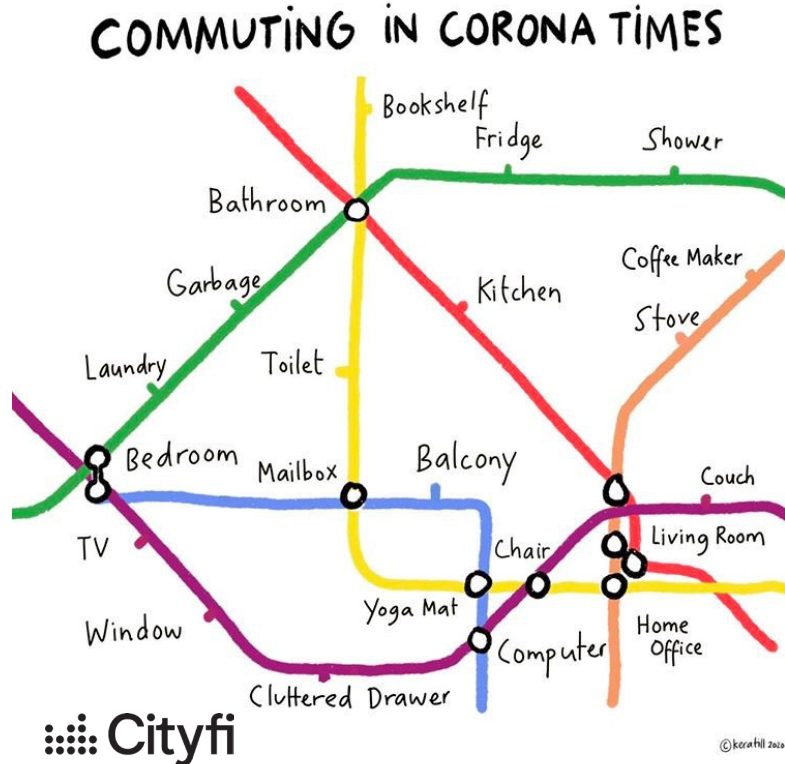


DATA FOR **PROGRESS**

THE STATE OF PLAY



Coronavirus: How the world of work may change forever



WORK

A record 4.4 million people quit in September as Great Resignation shows no signs of stopping

Published Fri, Nov 12 2021 1:09 PM EST



Jennifer Liu
@JLJENNIFERLIU

Forbes

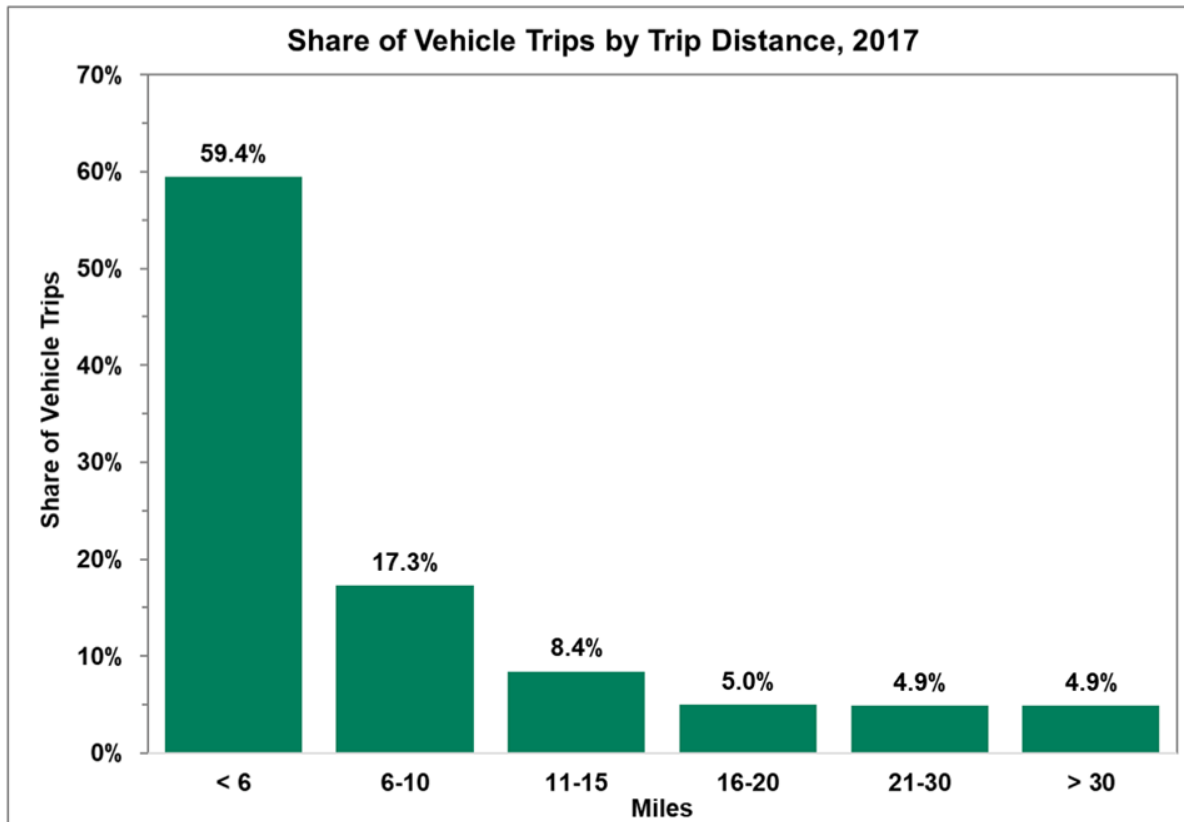
Mar 15, 2021, 09:00am EDT | 4,566 views

Adobe: Pandemic Shift Is Permanent, E-Commerce To Hit \$1 Trillion In 2022

PEW RESEARCH CENTER | FEBRUARY 18, 2021



Experts Say the 'New Normal' in 2025 Will Be Far More Tech-Driven, Presenting More Big Challenges



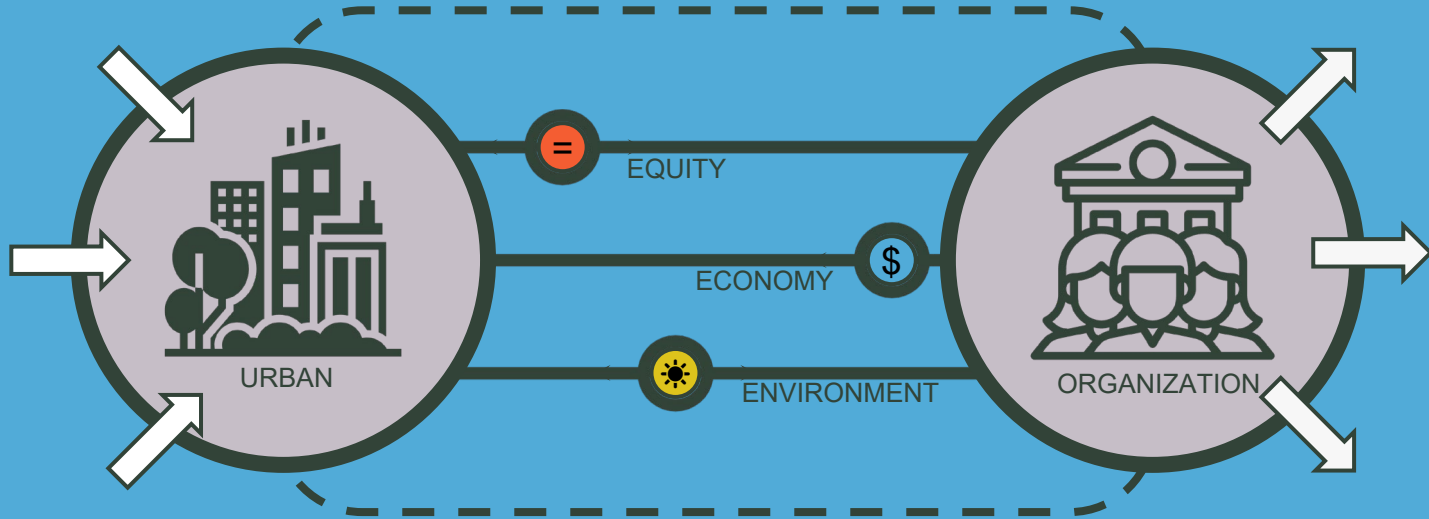
Source: U.S. Department of Transportation, Federal Highway Administration, [National Household Travel Survey](#) website, accessed June 6, 2018.

Business

Without access to charging stations, Black and Hispanic communities may be left behind in the era of electric vehicles

2022 +

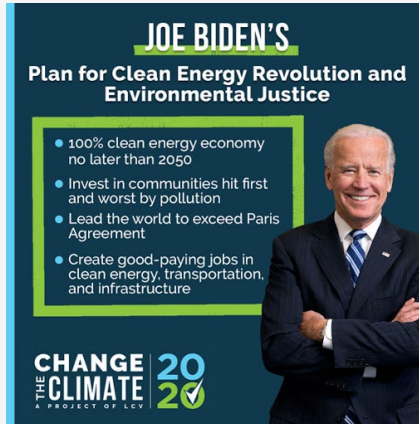
Change Management



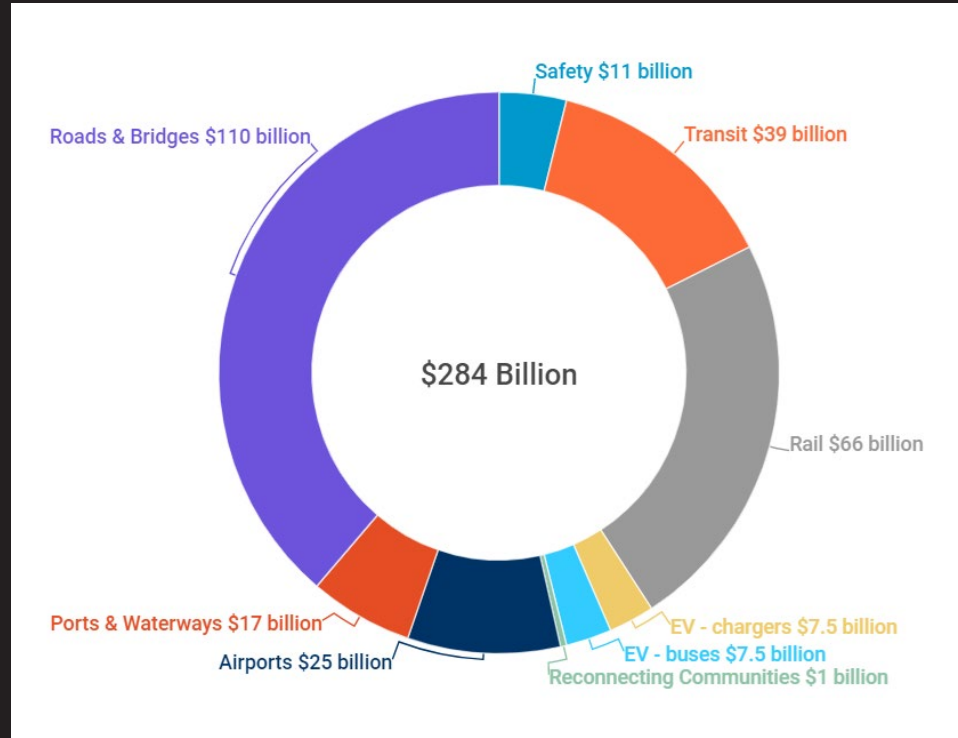
Positioning to work with the Biden-Harris Administration

The new federal administration, only 18 months into a 4 year term, provides a sea change in urban policy. Embracing the environmental justice 40 initiative whereby 40% of federal investment needs to benefit underserved or overburdened communities. Sustainability moving towards zero emissions by 2050 and Jobs for all that align with the pillars. We can mirror fed plan and build relationships and qualify for funding that then scale initiatives DC - wide.

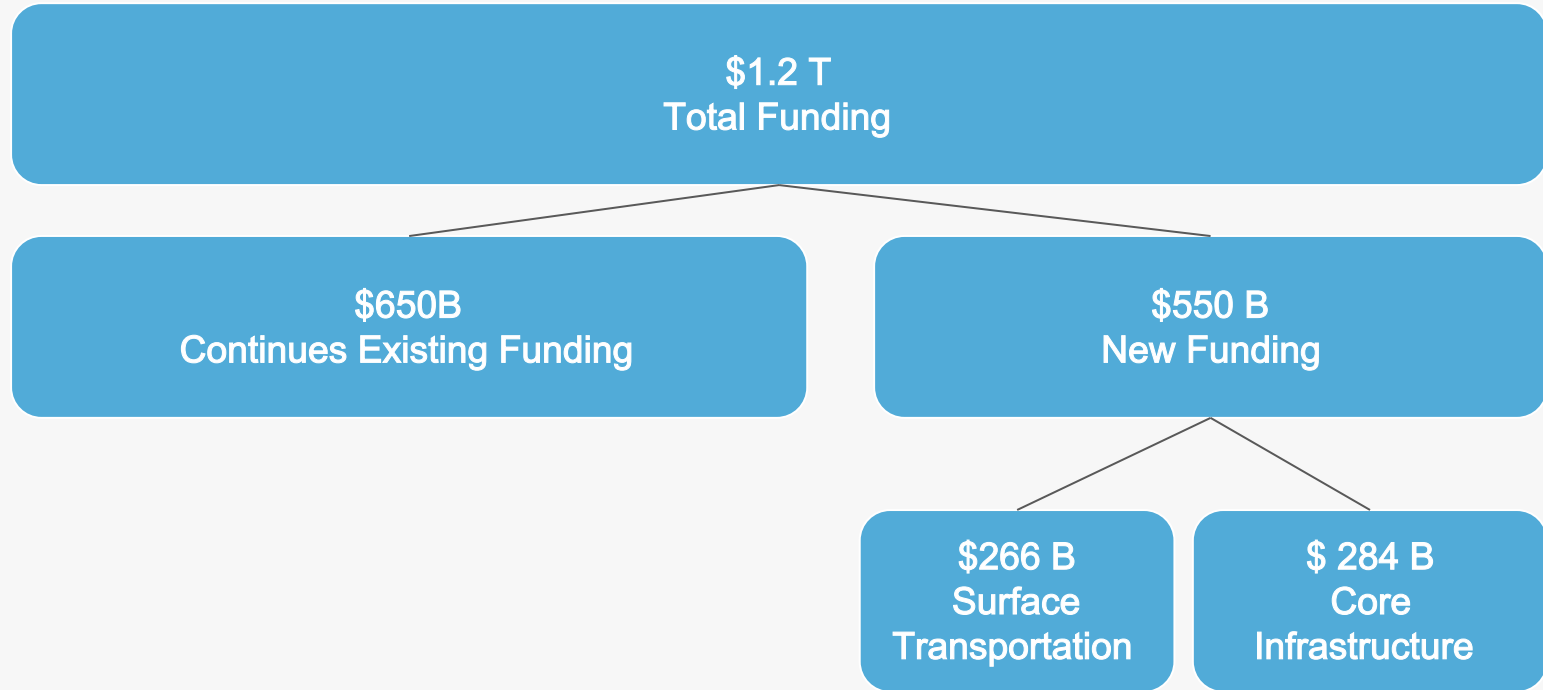
- Prioritize electric charging for funding
- 40% of funding to benefit underserved community
- Serve people where they need to go, regionally



Transportation Funding - Above Baseline



Source: National Association of Counties



New funding for
safe alternative
transportation

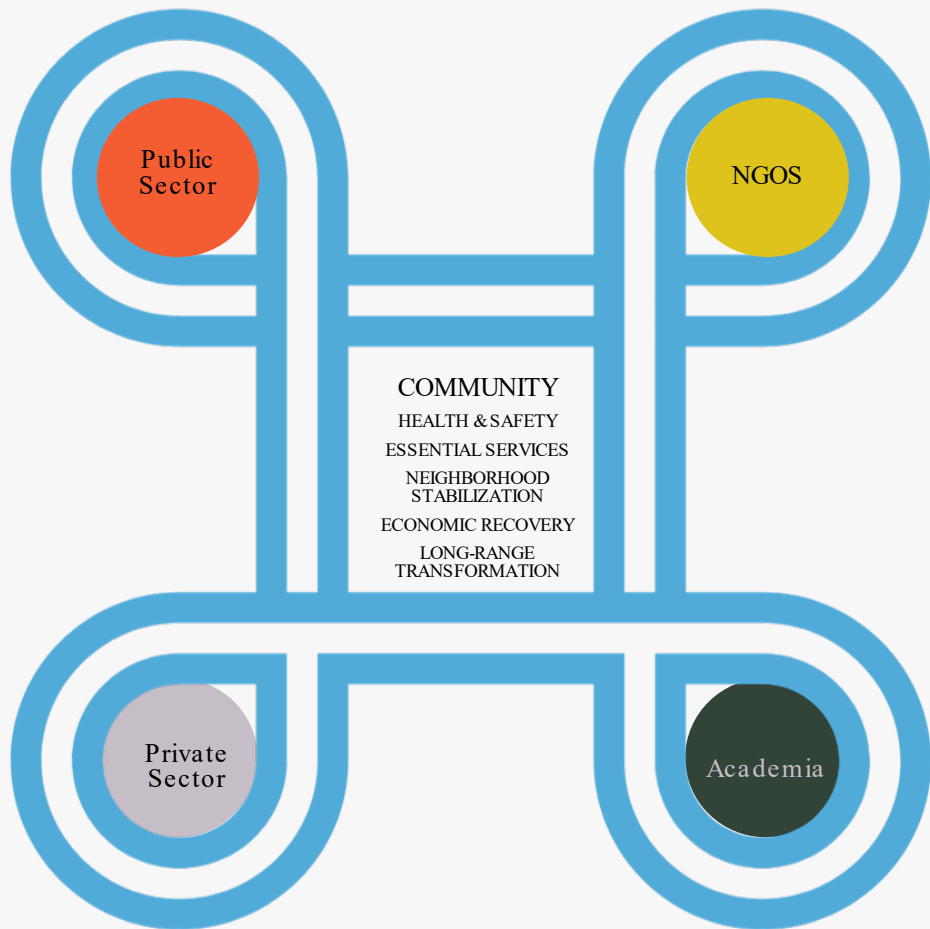
\$1.79B
/Yr

New programs to
address negative
impacts of roads
on humans

\$300M
/YR

Government as Convener

Start talking to
Partners now



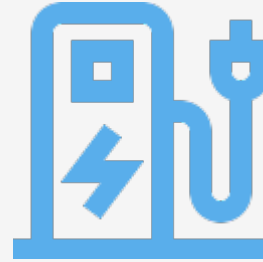
WHAT IS HAPPENING IN MOBILITY



Equitable



Walkable



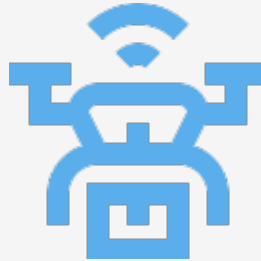
Electric



Safe



Micro



Connected



Shared



Autonomous



Residents, officials welcome light rail project to ease traffic on busy stretch of Palm Beach County

The light rail would connect Mall at Wellington Green to downtown West Palm Beach



San Francisco's newest park used to
be a highway

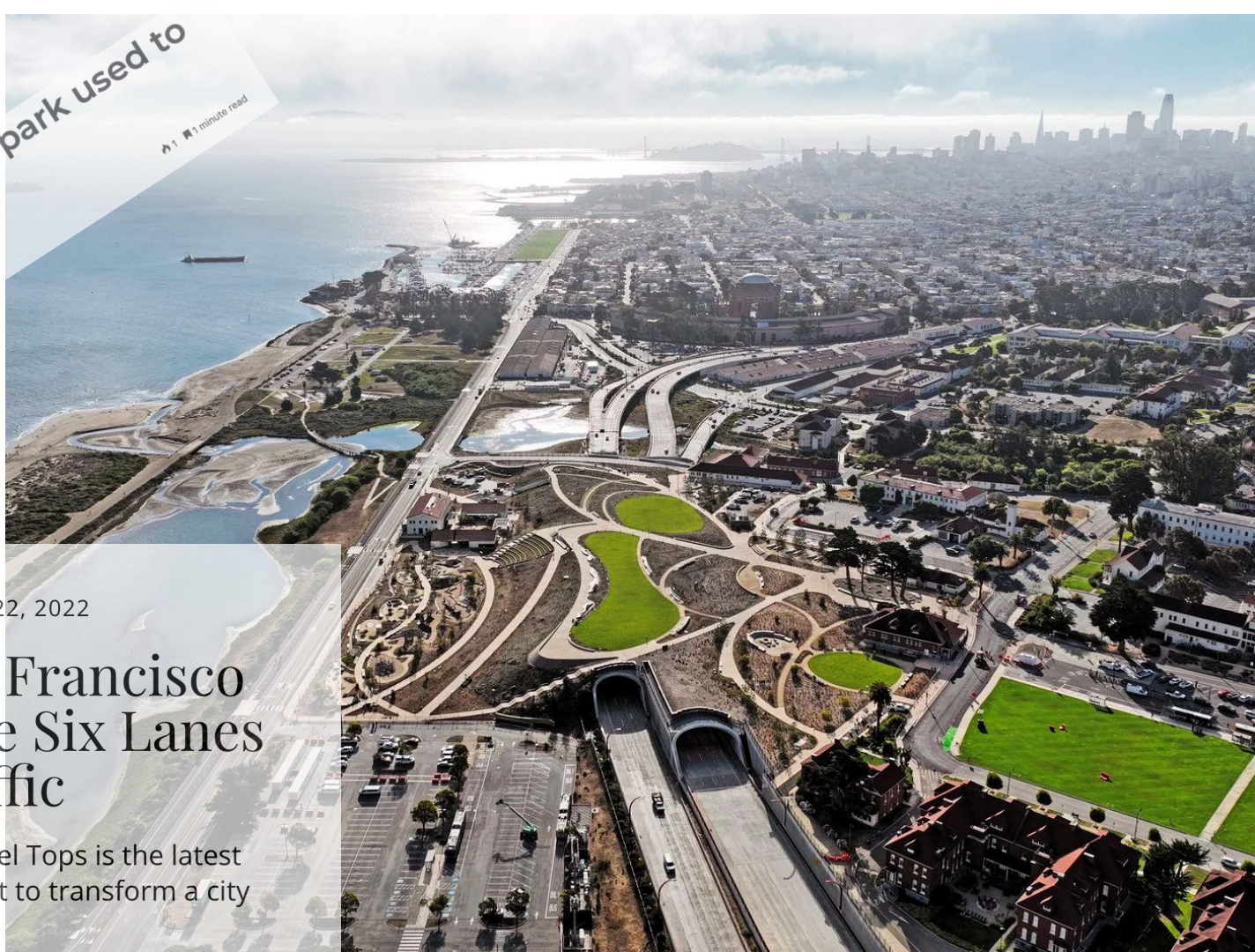
📍 1 minute read

© Stephan Scholz · July 20, 2022

TRAVEL | JULY 22, 2022

This New San Francisco Park Sits Above Six Lanes of Traffic

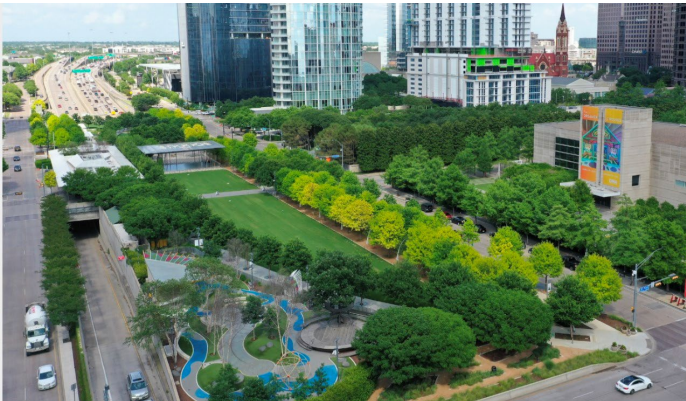
The 14-acre Presidio Tunnel Tops is the latest infrastructure reuse project to transform a city



Project Profile: Klyde Warren Park in Dallas, Texas



Cost	■ Phase I. \$110 million, currently under construction
	■ City of Dallas: \$20M (bond funds)
	■ Texas DOT: \$20M (highway funds)
	■ USDOT: \$16.7M (stimulus funds)
	■ Private donations: \$50M
	■ Phase 2.0 estimated cost: \$60M
Funding Sources	■ Bond funds from the City of Dallas
	■ Highways funding from the State of Texas
	■ Stimulus funding
	■ Individual donors directly to the Woodall Rodgers Park Foundation
	■ Real Estate Council
Project Delivery / Contract Method	Design-Build-Operate-Maintain
Private Partner	Woodall Rodgers Park Foundation





**Seoul tears down an urban highway
and the city can breathe again**

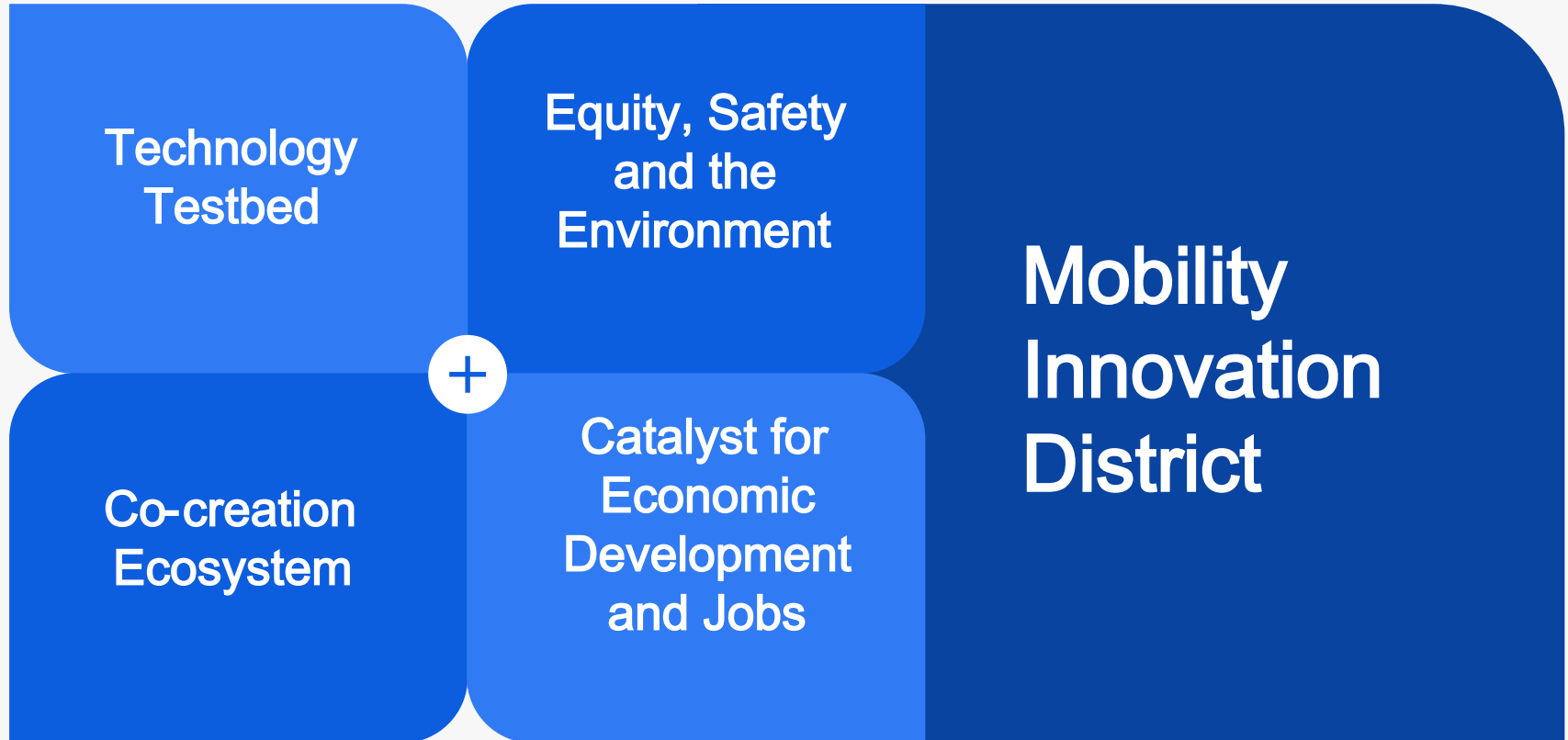


SOUTHWEST WASHINGTON, DC

MOBILITY INNOVATION DISTRICT

SW/MID

Mobility Innovation District



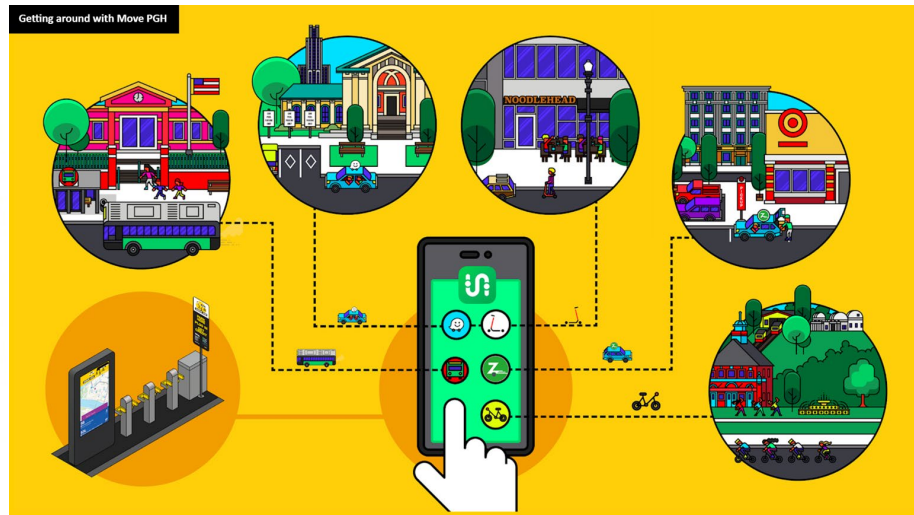
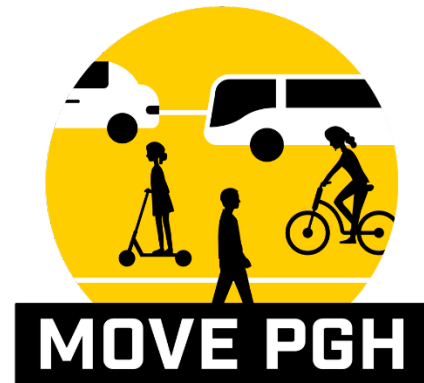
CITYLAB

A Micromobility Experiment in Pittsburgh Aims to Get People Out of Their Cars

The Pittsburgh Micromobility Collective will create all-in-one mobility hubs near transit stops, to compete with Uber and Lyft and help commuters go car-free.

By [Laura Bliss](#)

October 11, 2019, 3:23 PM EDT



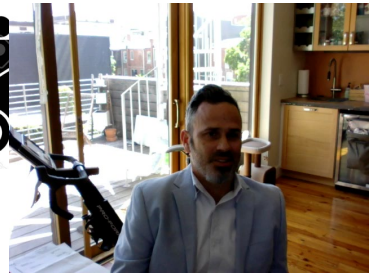
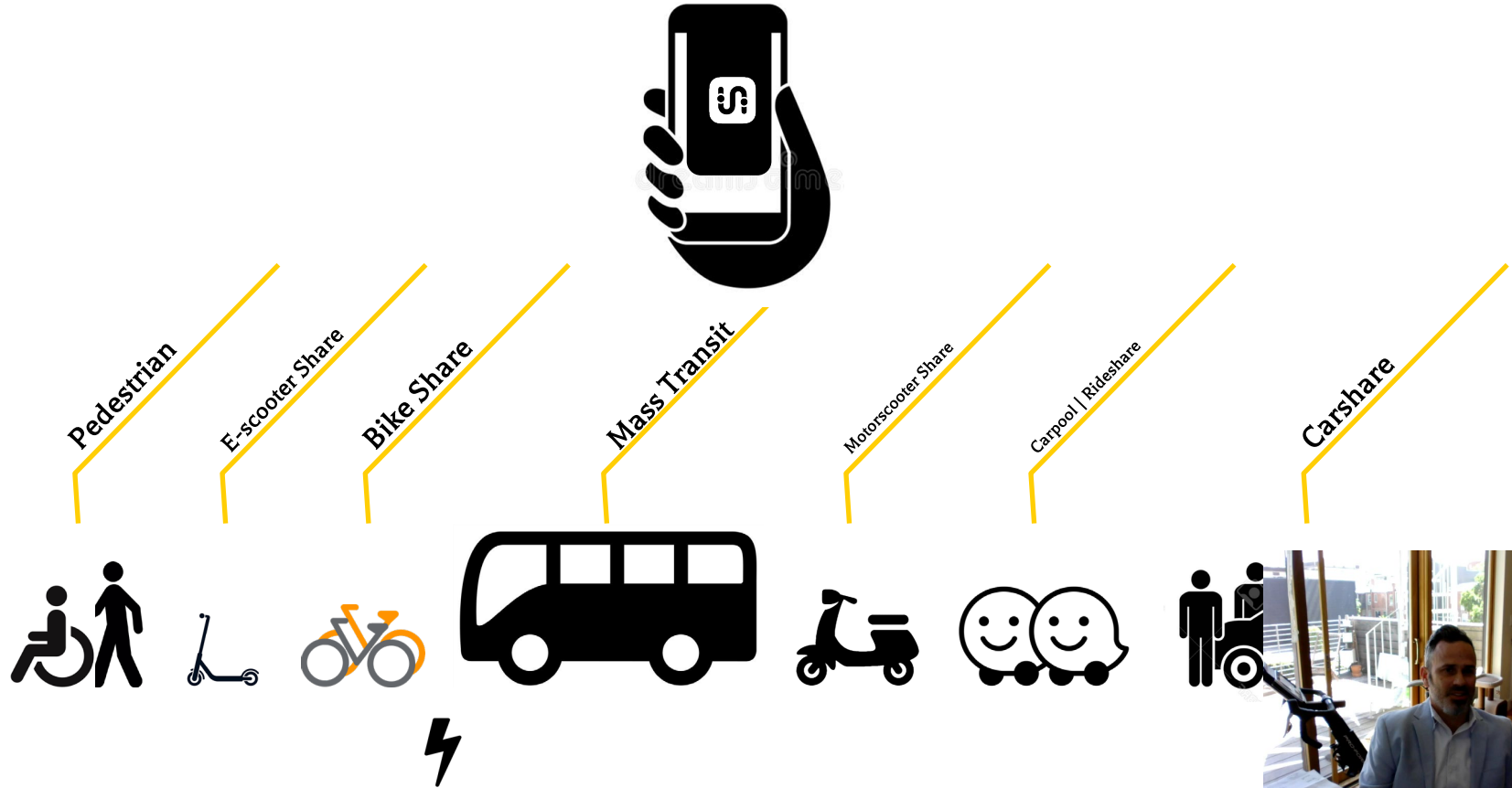
Pittsburgh Mobility Collective | Move412.com



Goals

1. Expand and extend access.
2. Reduce transportation cost.
3. Reduce transportation emissions.
4. Provide upward mobility.
5. Modal interoperability.

Integrated Virtually



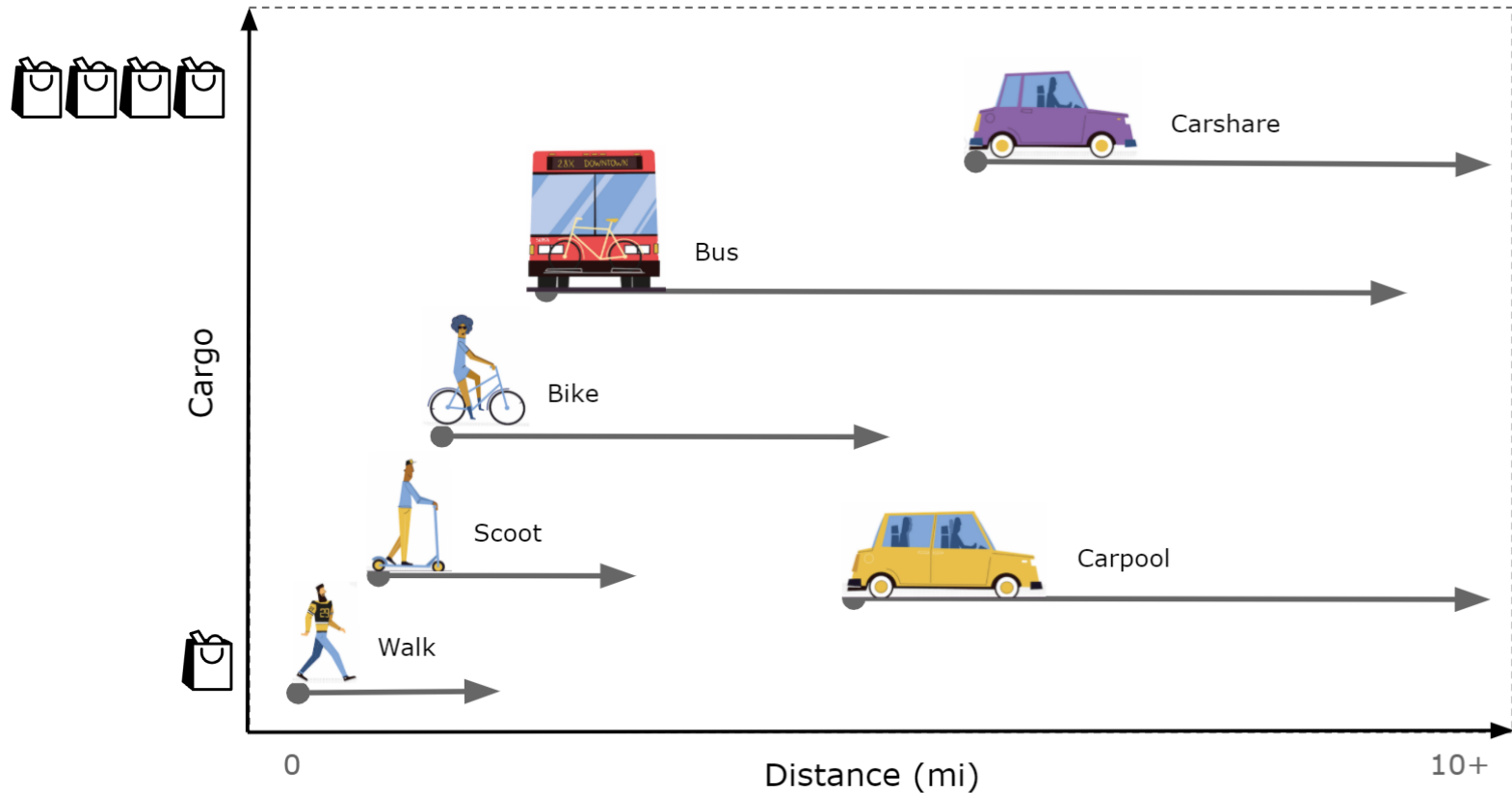
Integrated Physically

<https://como.org.uk/wp-content/uploads/2019/10/Mobility-Hub-Guide-241019-final.pdf>

- Transit stop
- Real time transit information
- Public bike share station
- Shared e-scooter charging
- Bike racks/Fix-it station
- Carshare
- Shared motorscooter parking
- Carpool pick-up
- Pedestrian amenities
- Parcel delivery/pick up
- Personal delivery device deployment
- Electric vehicle charging
- Retail and amenities
- Mobility-oriented development!



Providing options to meet a diversity of trip needs



Repurpose Today's Tools



POLICY +
REGULATIONS



PROCESS
IMPROVEMENT



CAPACITY-
BUILDING



ADAPTIVE
DECISION-MAKING

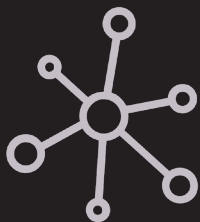


BUDGET
PRIORITIZATION

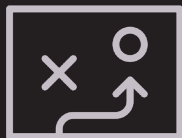


RISK
ASSESSMENT

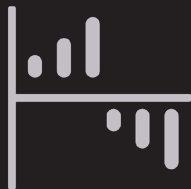
New Tools for the Future



SYSTEMS
THINKING



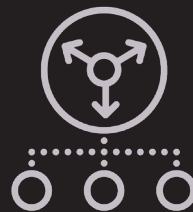
PROACTIVE
STRATEGIES



DATA-INFORMED
INSIGHTS



REAL-TIME
RESPONSE



ADAPTIVE
LEARNING

People First



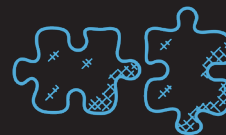
RESPONSIVE
LEADERSHIP



DATA-DRIVEN
DECISION-MAKING



ADAPTIVE
WORKFORCE



MULTI-SECTOR
PROBLEM
SOLVERS



TRANSPARENT +
TRUSTED

TRANSPORT & LAND USE IS COMPLICATED



Be outcome
driven and have
a long term
perspective

Take a regional
approach and
develop
partnerships

Be proactive in
engaging with
federal and
state agencies

