



1

Executive Director's Report

- Cap Metro Peer Exchange Postponed to Spring 2023
- 2050 Long Range Transportation Plan Update RPF
- October is National Pedestrian Safety Month
- National Walk & Roll to School Day Oct. 12
- Mobility Week Oct. 21 – 28
- Love to Ride Challenge Oct. 21 – Nov. 30
- Rail~Volution 2022 & Regional Day Nov. 2
- TPA Grant Application Workshop November 3
- ULI FL Summit & Elected Official Workshop on Dec. 5
- TPA Mobile Tours Coming Up: PBIA, Port of Palm Beach, Palm Tran, Tri-Rail, & Boca Raton Brightline

2

TPA Team Building

- DISC Analysis and Professional Trainings
- Staff Cross Training Presentations
- Staff Birthday Celebrations
- Flagler Transportation Field Trip
- TPA School Supply Drive
- Dog Meet & Greet Days
- Staff Bike Rides
- Weekly Staff Runs
- Park(ing) Day

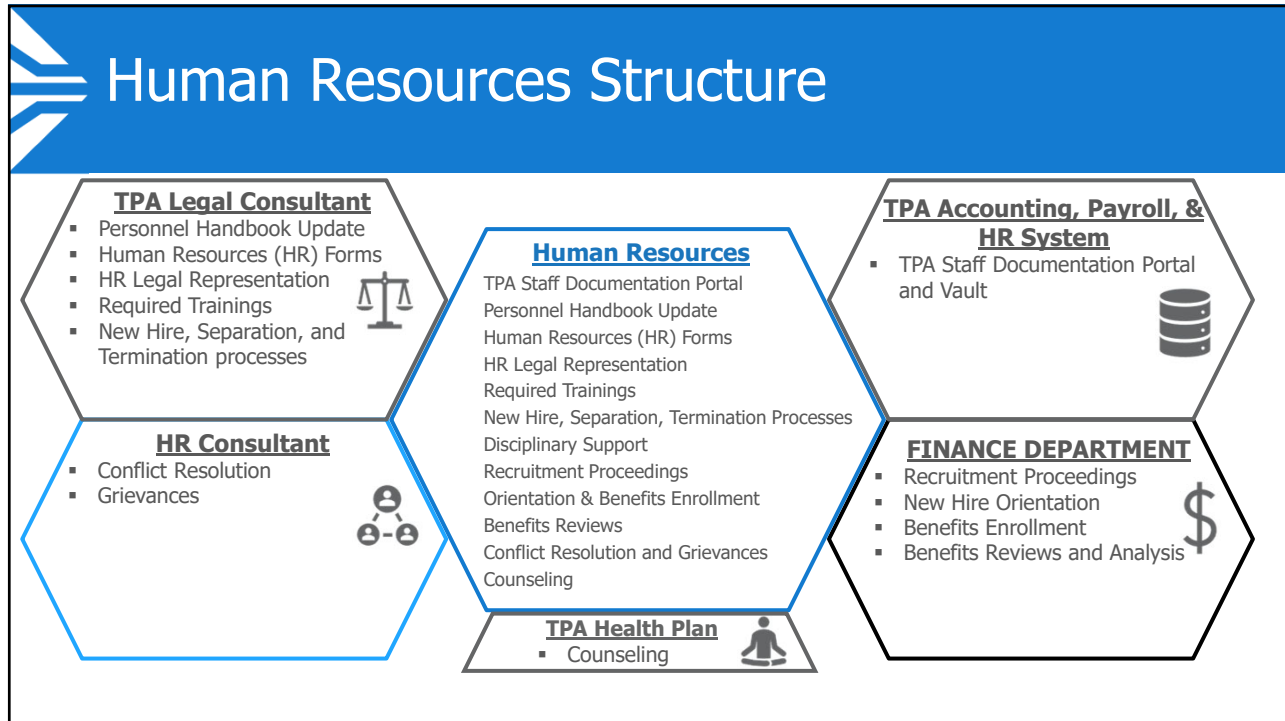


3

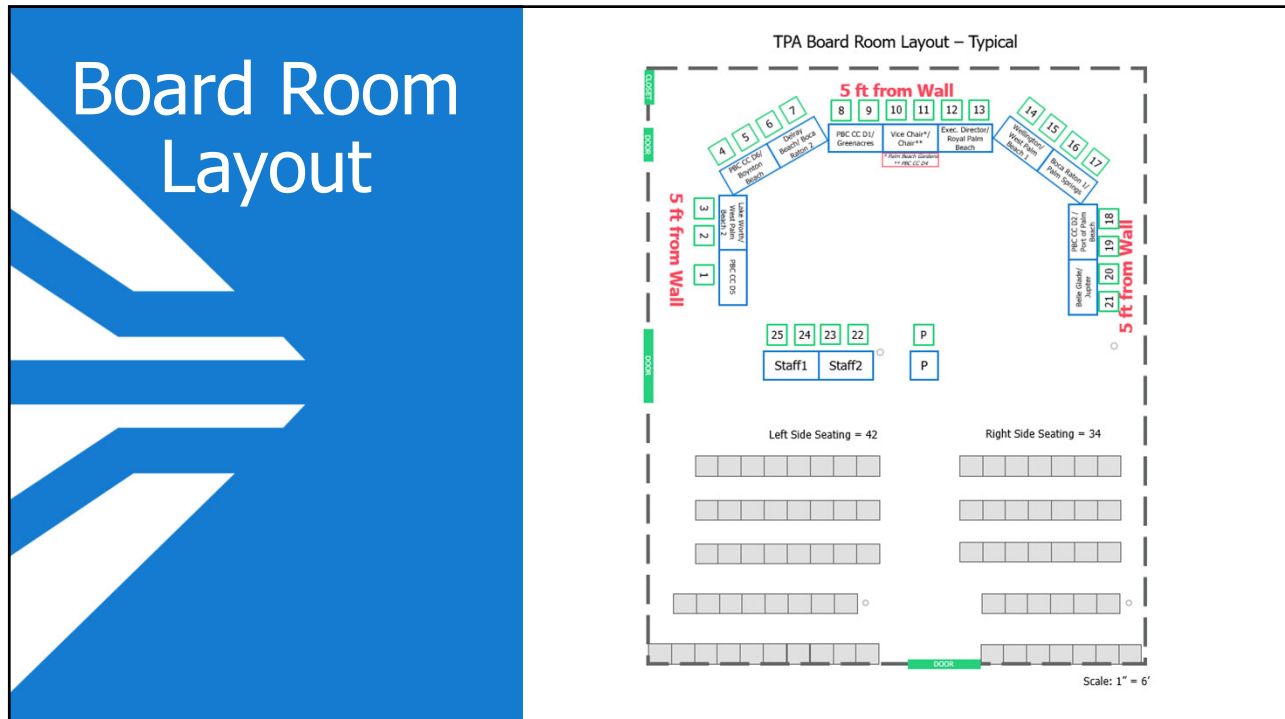
Human Resources Structure




4



5



6



PalmBeachTPA.org

Valerie Neilson, AICP
EXECUTIVE DIRECTOR
VNeilson@PalmBeachTPA.org