

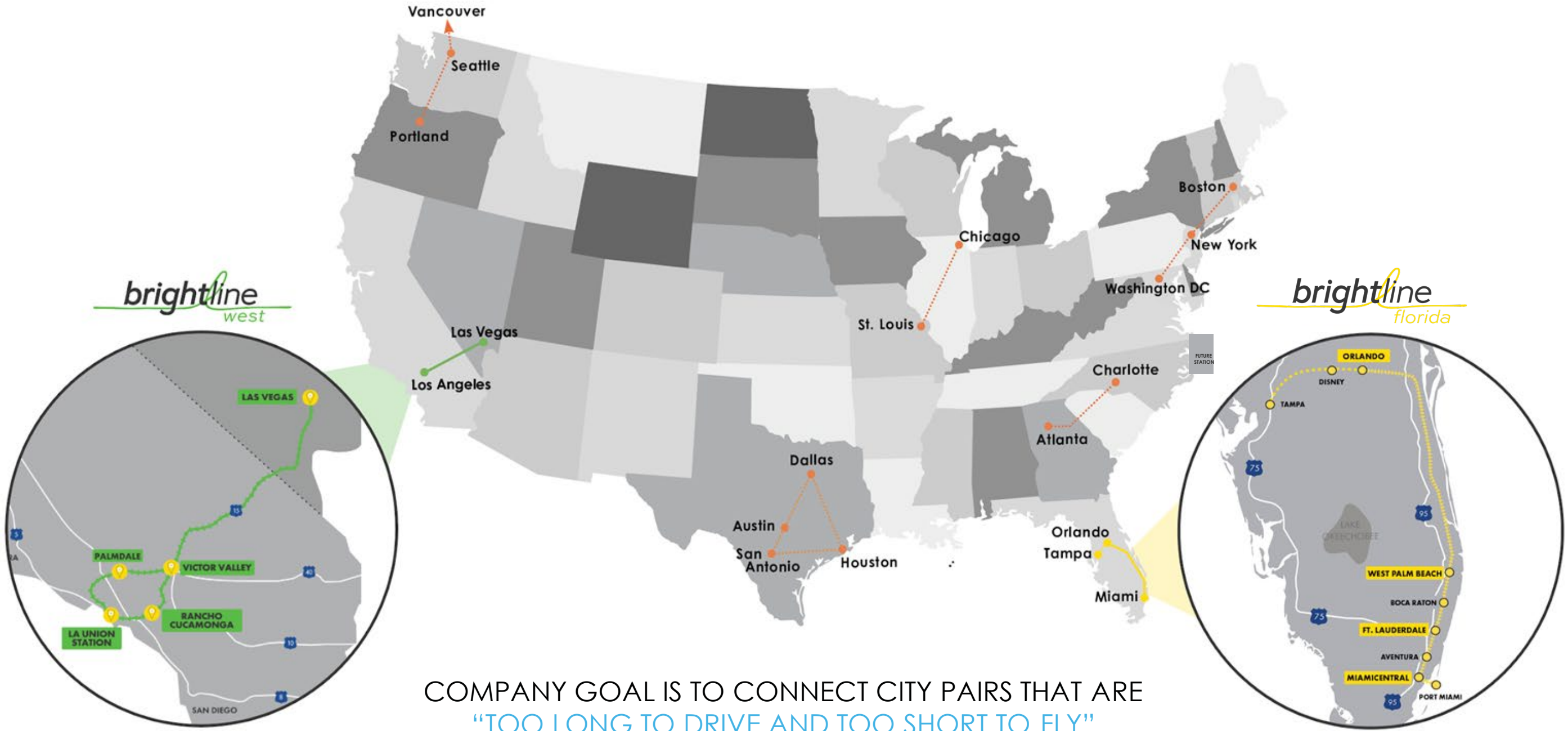
A photograph of a Brightline train on an elevated track in a city. The train is white with green and yellow accents and features the Brightline logo and website. The background consists of modern high-rise buildings under a clear blue sky. The Brightline logo is overlaid at the top of the image.

brightline[®]

Palm Beach TPA Update

Ali Soule, VP Community Relations
April 2022

Bringing modern eco-friendly intercity rail to the U.S.



COMPANY GOAL IS TO CONNECT CITY PAIRS THAT ARE
"TOO LONG TO DRIVE AND TOO SHORT TO FLY"

Brightline's Major Milestones

- Three completed & operational stations: MiamiCentral, Fort Lauderdale and West Palm Beach
- Building two additional In-Line stations: Aventura and Boca Raton; PortMiami planned
- Brightline South Florida operations: Resumed full operations November 8th Recently hired 200+ new teammates
- Launched **Brightline+**, door-to-door mobility solution
- Miami to OIA connection on track for substantial completion by late 2022
- Extension to Tampa in development

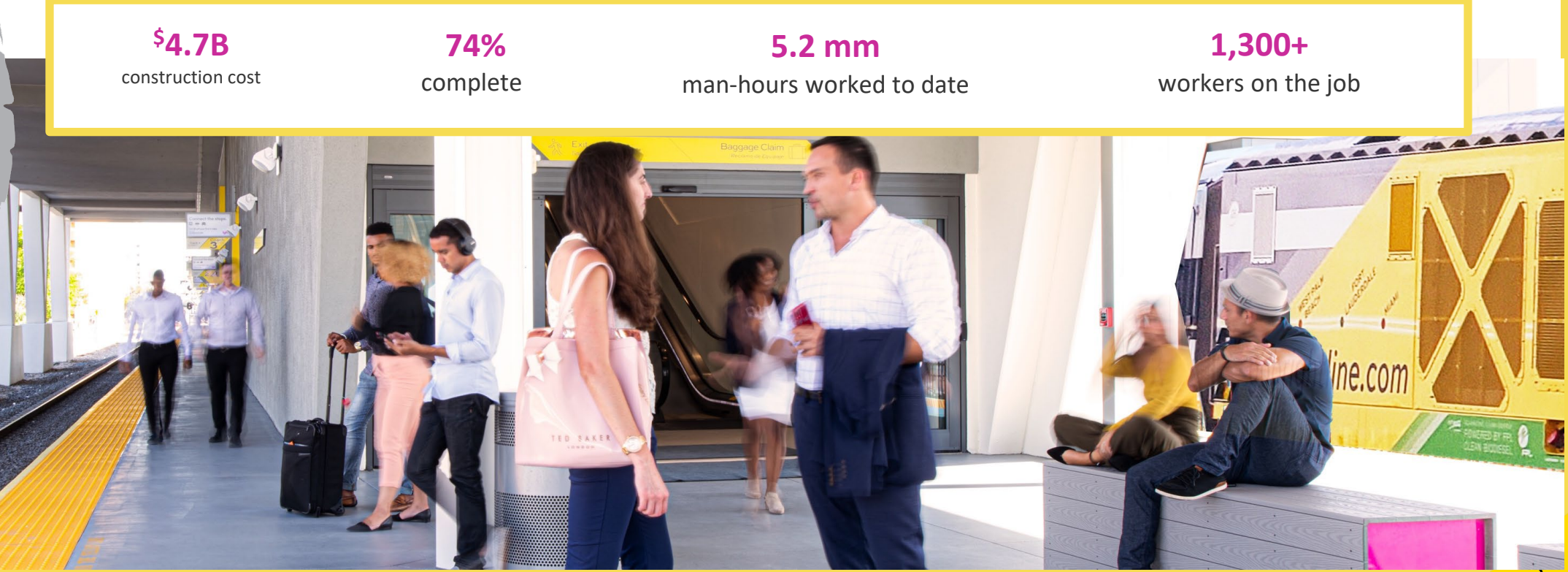
Orlando Extension

\$4.7B
construction cost

74%
complete

5.2 mm
man-hours worked to date

1,300+
workers on the job



Building smarter and more prosperous communities

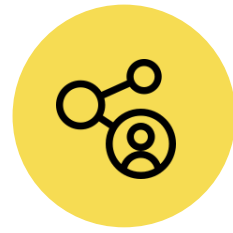
As urban life evolves and the demand for smarter, more efficient cities becomes higher, mobility networks like Brightline play a key role in the long-term prosperity of the areas they serve.



Boost of private capital towards infrastructure development



New & expanded job markets



Greater connectivity to economic centers



Increased real estate value through Transit Oriented Development



MIAMICENTRAL

FLAGSHIP STATIONS

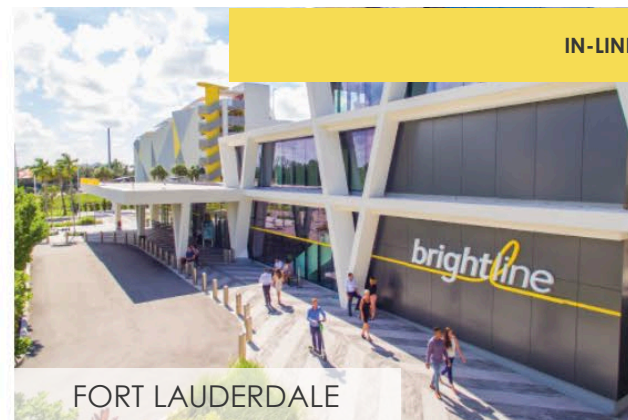


ORLANDO INTERNATIONAL AIRPORT

IN-LINE STATIONS



AVENTURA



FORT LAUDERDALE



BOCA RATON



WEST PALM BEACH

Brightline

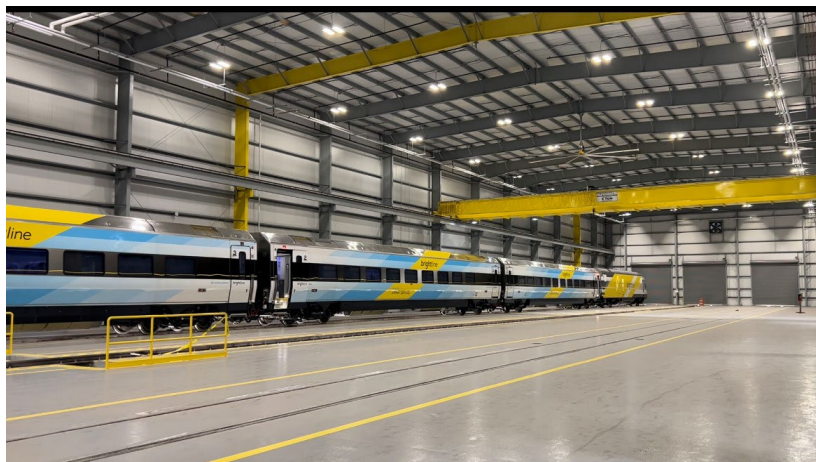
+

Our new door-to-door service, powered by our app and supported by a new fleet of Brightline branded vehicles.

brightline



Phase 2: On Track to Orlando



brightline

Phase 2 Scope of Work

- New double track
- All crossings upgraded to meet standards set by FRA & FDOT
- *FRA sealed corridor* where speeds exceed 79 mph
- Positive Train Control
- Vehicle Presence Detection
- Replacement or rehabilitation of bridges over navigable waterways
- Hazard Analysis (FRA regulation)

Upcoming Phase 2 Work in Palm Beach County

- 88% of crossings are completed (23 of 26 total crossings)
- 3 crossings remain:
 - Countyline Rd. – August
 - Tequesta Dr. – end July/early August
 - Riverside Dr. – September
- Loxahatchee River bridge rehabilitation begins April 10
 - April 10 – May 25
 - 14” clearance improvement project in coordination with Jupiter Inlet District
 - Full rehabilitation that includes replacement of the electrical system and operating machinery
 - Addition of a second track
 - Residents can text LOX to 888-384-0037 to receive updates

Safety & Outreach

Engineering

Camera analytics

Federal grant opportunities

Channelization

Enforcement

Law enforcement deployment

Red light camera pilot project

FRA grants for law enforcement deployment

Education

Operation Lifesaver materials – English, Spanish, Creole and Portuguese

Partnerships with 211 on suicide awareness and mental health

School district outreach

Thank You