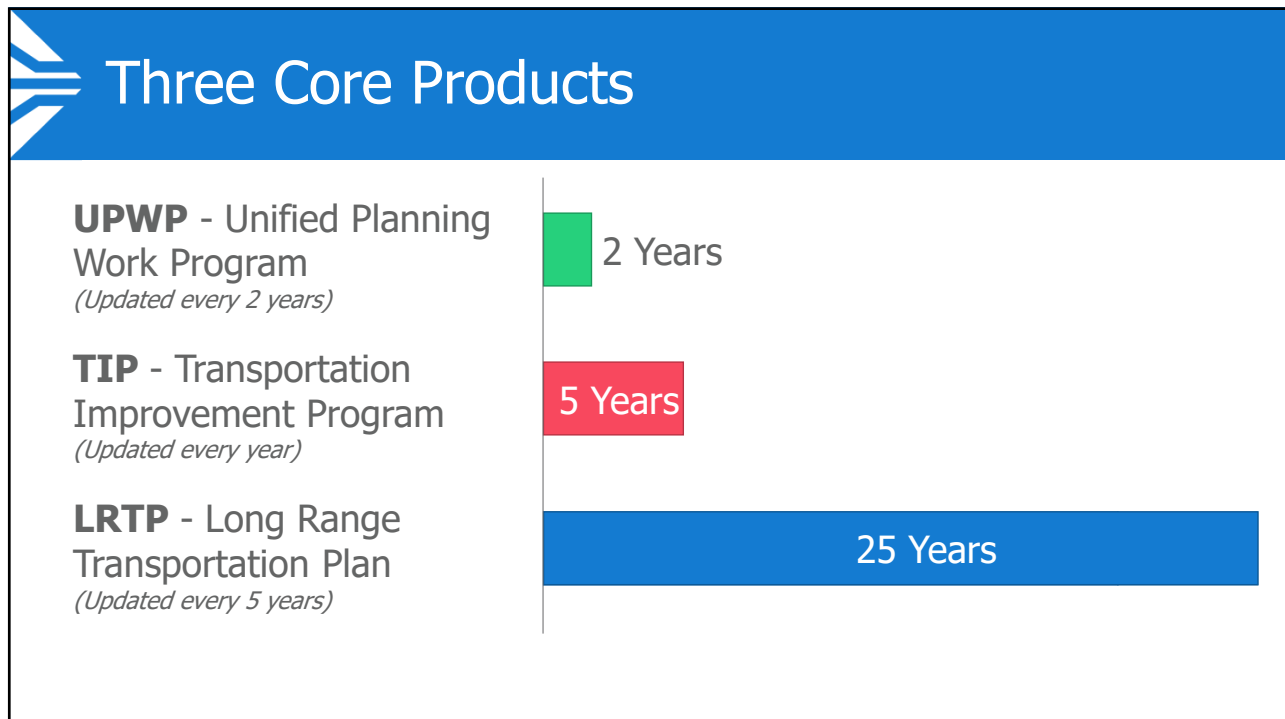





1



2

What is an LRTP?



- Maps out future state and federal transportation investments
- Serve as the foundation for the development of the Transportation Improvement Programs (TIPs)
- Reflects the region's goal through project prioritization
- Financial components guides how the plan can be implemented

3

2045 Plan Recap



Adopted December 12, 2019



Planning horizon of 2020 to 2045



Defined the priority pedestrian and bicycle corridors



Established the 561 transit corridors



Established performance measures and targets




Outlined funding programs



4

23 CFR § 450.324

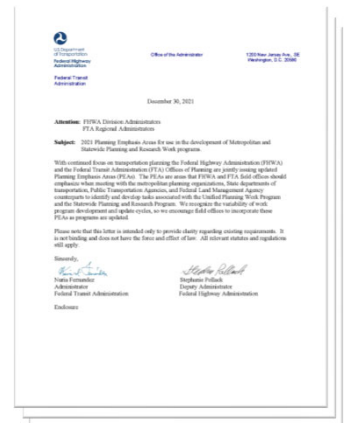


- Minimum 20-year planning horizon with 5-year updates
- Development of an integrated multimodal system
- Include operational and management strategies
- Congestion management process
- Assessment of capital investment
- Transportation and transit enhancement activities
- Environmental mitigation activities
- Financial Plan

5

2021 FHWA Planning Emphasis Areas

- Tackling the Climate Crisis
- Equity and Justice40
- Complete Streets
- Public Involvement
- Department of Defense Coordination
- Federal Land Management Agency Coordination
- Planning and Environment Linkages
- Data in Transportation Planning

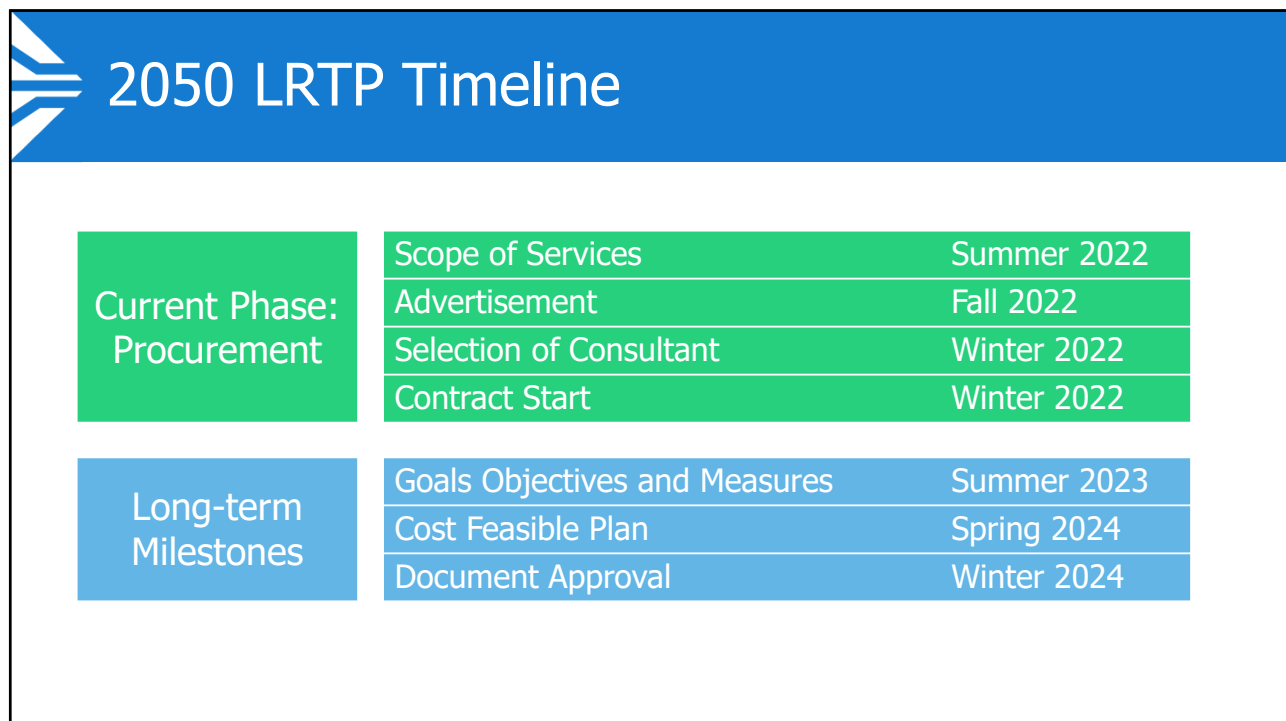


The image shows the cover page of a document titled "2021 FHWA Planning Emphasis Areas". The document is dated December 30, 2021, and is from the Office of the Administrator, Federal Highway Administration. It is addressed to the Federal Transit Administration. The subject is "2021 Planning Emphasis Areas for use in the development of Metropolitan and Statewide Planning and Research Work programs". The document discusses the need for transportation planning and the role of the Federal Highway Administration (FHWA) and the Federal Transit Administration (FTA) in this process. It mentions the importance of equity and justice, and the need for data in transportation planning. The document is signed by the Administrator of the Federal Highway Administration and the Administrator of the Federal Transit Administration.

6



7



8

2050 RTP Timeline

Calendar Year	2020		2021	2022		2023	2024		2025	
Fiscal Year	FY 20	FY 21	FY 22	FY 23	FY 24	FY 25	FY 26			
Regional Meeting Support 2045										
2045 RTP Consultant Contract										
SERPM 9 Development		P								
Big Data Procurement			P							
2050 RTP Development		S	S	S	P	P				
Regional Unified Financial Forecast										
Regional Meeting Support 2050										
M/LRTP Development				S	P					
UPWP Funds Allocation			MOU	UPWP	\$	\$	\$	\$		

S – scoping; P – procurement; MOU – Memorandum of Understanding; UPWP – Unified Planning Work Program

UPDATE


9

Steering Committee

Technical Advisory Committee

- More seamless to administer than a joint committee
- Frequent updates on LRTP progress during regular meetings
- More presentations on technical items for feedback
- All committees and Board will see major milestones
 - Performance Measures
 - Needs list
 - Cost Feasible Plan


10



Scope of Services

1. Project Management
2. Compile and Summarize Data and Documents
- 3. Engage the Public**
4. Performance-Based Planning: Goals, Objectives, and Measures
5. Financial Resources
- 6. Multimodal Needs**
7. Project Evaluation and Cost Estimates
- 8. Scenario Planning and Model Support**
9. Cost Feasible Plan
- 10. LRTP Evaluation and Implementation Plan**
11. Document Creation and Planning Review
12. Additional Support

11



Engage the Public

- **Communication Plan** – branding, messaging outreach
- **Meetings**
 - 30 community meetings
 - 20 staff meetings with infrastructure owners
 - 5 community workshops in county
 - 3 additional workshops at TPA office
- **Interactive public participation tools**
- **Digital surveys**
- **Branding and Outreach materials**

UPDATE

12

Multimodal Needs

Comprehensive list of projects for next 25 years

- Local submittal of projects - from existing plans with consistent cost estimates
- Pedestrian and Bicycle/Micromobility Priority Networks
- Transit & Local Circulators
- Road Capacity
- Intelligent Transportation Systems (ITS)
- Freight
- Electric and Alternative Fuel Infrastructure
- Operations and Maintenance (O&M)
- Emerging Technologies

13

Scenario Planning & Model Support

2050 Complementary Land Use & Development

Reallocate additional development to key areas based on potential land use policy changes

2050 Existing Opportunities Land Use & Development

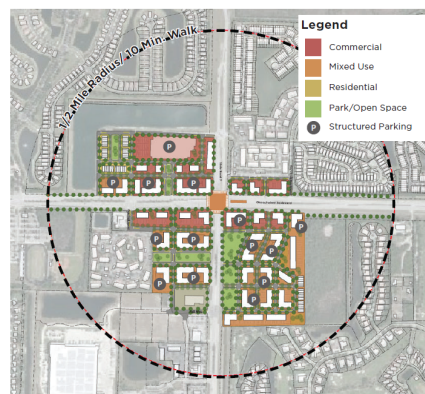
Reallocate additional development to key areas based on current land use policy

2035 Existing Opportunities Land Use & Development

Reallocate additional development to key areas based on current land use policy

Example from Okeechobee Blvd Study

STATE ROAD 7



POTENTIAL SCENARIO DEVELOPMENT PROGRAM SUMMARY

HOUSING

New Housing Units

2,000

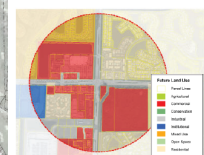
COMMERCIAL

New Development (sq. ft.)

1,750,000

Parking Spaces

3,500



Future Land Use Map

14

Regional Transportation Plan Modeling

- **2020 Base**
- **2050 Existing + Committed (E+C)**
- **2050 Regional Needs Assessment**
- **2050 ACES and Technology** – assumes the E+C transportation network but a percentage of vehicle miles traveled (VMT) as autonomous, connected, electric, and/or shared.
- **2050 Resiliency** – assumes the E+C transportation network but a certain level environmental impacts including but not limited to sea level rise, rising surface temperatures, storm surge, rising ground water levels and greenhouse emissions.
- **2050 Disruptions and Opportunities** – assumes the E+C transportation network but with an assumed level of freight movements, as well as telehealth, telecommute, and other forms of virtual accessibility.
- **2050 Cost Feasible** – Based on the three MPO's LRTP Cost Feasible project information.

15

Scenario Planning & Model Support


Measuring Performance – How well do the scenarios/projects achieve:

- Goals, Objectives, and Measures of the TPA
- Equity
- Housing affordability and job access

Land Use Changes and Strategies – what opportunities are there to:

- Incentivize and support preferred development pattern
- Update land use policy


16



LRTP Evaluation & Implementation

- Summarize potential attainment of LRTP Goals, Objectives, and Measures
- Identify action steps to implement Cost Feasible Plan and Unfunded Needs
- Potential action steps to implement law, policy, and/or land use scenario changes

17



Contact Info

Andrew Uhler
auhler@palmbeachtpa.org

18

