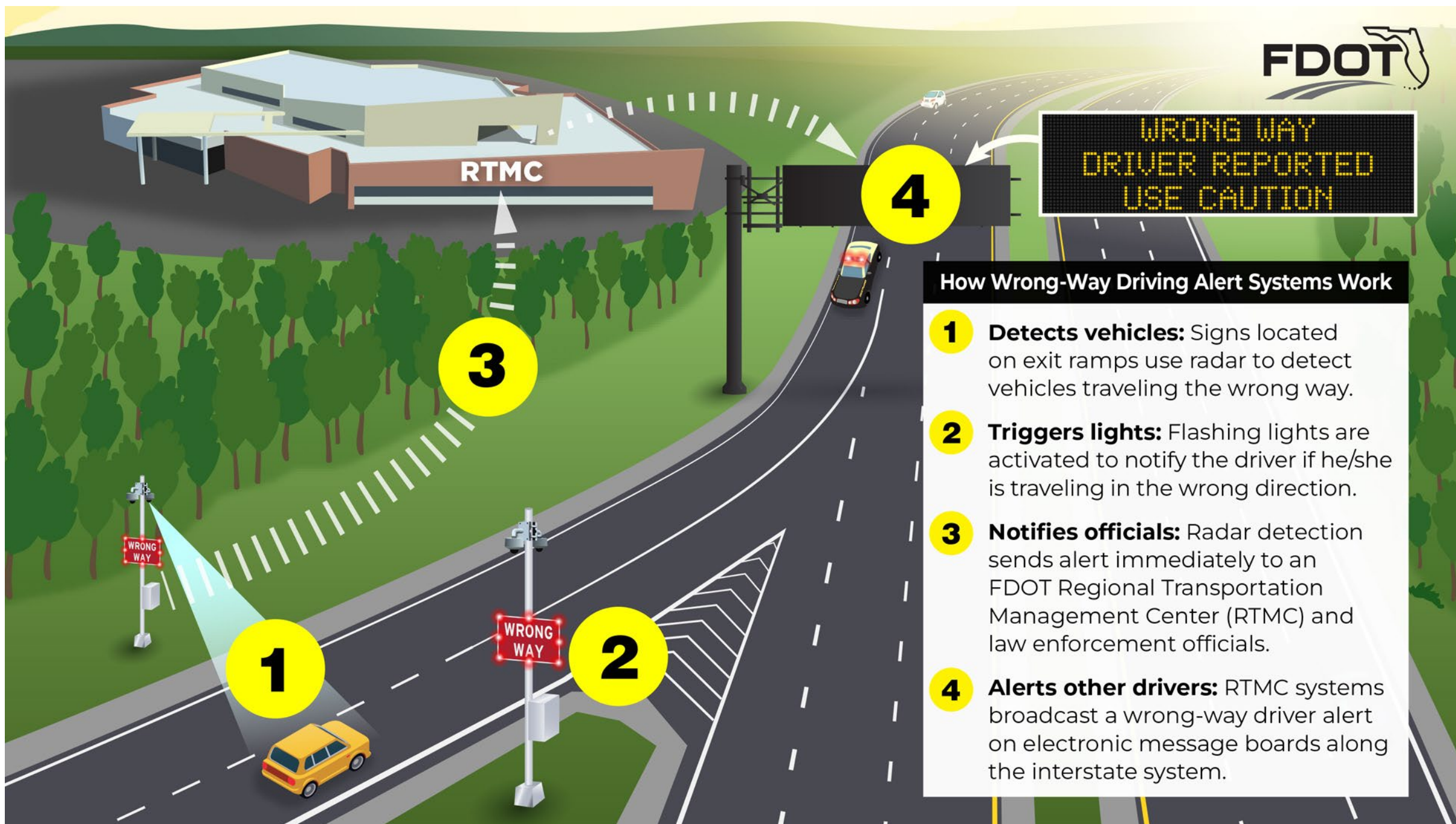




I-95 Wrong Way Detection



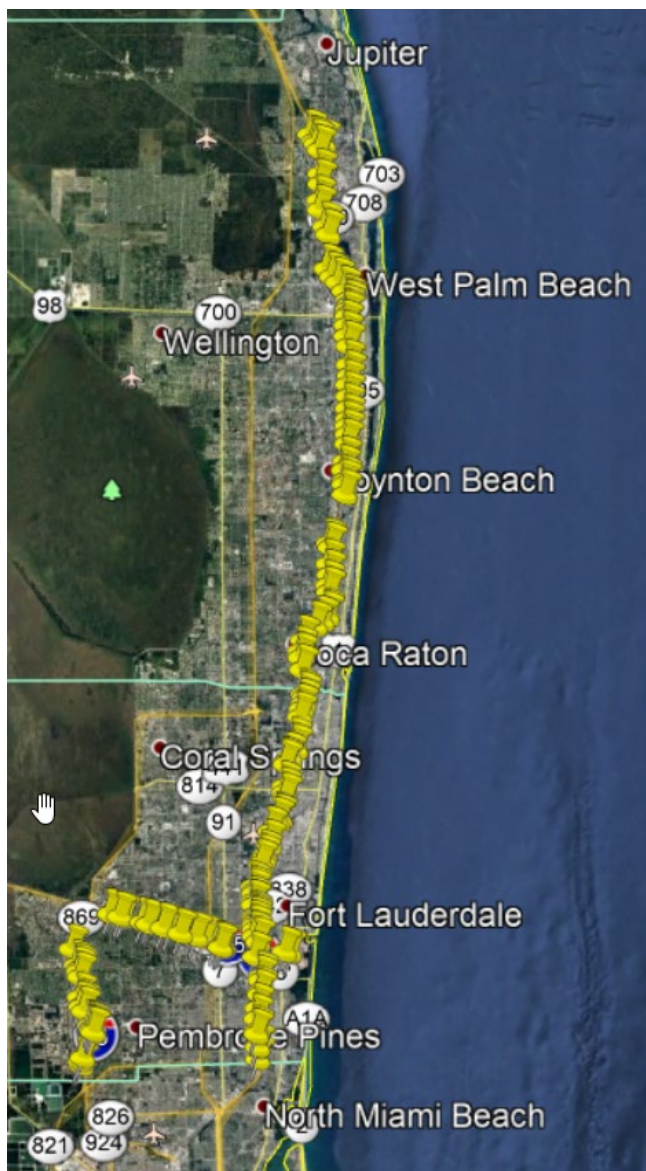


How Wrong-Way Driving Alert Systems Work

- 1 Detects vehicles:** Signs located on exit ramps use radar to detect vehicles traveling the wrong way.
- 2 Triggers lights:** Flashing lights are activated to notify the driver if he/she is traveling in the wrong direction.
- 3 Notifies officials:** Radar detection sends alert immediately to an FDOT Regional Transportation Management Center (RTMC) and law enforcement officials.
- 4 Alerts other drivers:** RTMC systems broadcast a wrong-way driver alert on electronic message boards along the interstate system.



Central Office's 520 Ramp ID List: 134 Locations in D4



#	RAMP ID	District	County	Ramp Type	Latitude	Longitude	Off Ramp Name
1	1224	4	BROWARD	Parclo Loop	26.27745	-80.1257	I-95 S & EXIT 39
2	M11	4	BROWARD	Diamond	26.0535	-80.1624105	I-95 S & EXIT 22
3	SM4	4	PALMBEACH	Diamond	26.510694	-80.072676	I-95 N & EXIT 56
4	SM15	4	PALMBEACH	Diamond	26.71562	-80.085706	I-95 N & EXIT 71
5	1195	4	BROWARD	Diamond	26.03988	-80.16354	I-95 S & EXIT 21
6	SM5	4	PALMBEACH	Diamond	26.59168	-80.069331	I-95 S & EXIT 61
7	SM7	4	PALMBEACH	Diamond	26.613945	-80.068899	I-95 S & EXIT 63
8	1218	4	BROWARD	Partial Diamond	26.22551	-80.13617	I-95 N & EXIT 36
9	1192	4	BROWARD	Diamond	25.98942	-80.16566	I-95 N & EXIT 19
10	1606	4	PALMBEACH	Diamond	26.35714	-80.11949	I-95 S & EXIT 44
120	1263	4	BROWARD	Diamond	26.11628	-80.52018	I-595 W & EXIT 1
121	1646	4	PALMBEACH	Parclo Loop	26.39598	-80.09121	I-95 N & Exit 48B
122	1610	4	PALMBEACH	Partial Diamond	26.39858	-80.09089	I-95 S & EXIT 48A
123	1253	4	BROWARD	Trumpet	26.08277	-80.36163	I-75 S & EXIT 15
124	1249	4	BROWARD	Partial Diamond	26.06761	-80.3565	I-75 S & EXIT 13B
125	1269	4	BROWARD	Diamond	26.10117	-80.258	I-595 W & EXIT 5
126	1633	4	PALMBEACH	Diamond	26.77895	-80.09871	I-95 N & EXIT 76
127	1265	4	BROWARD	Diamond	26.11298	-80.30666	I-595 W & EXIT 3
128	SM17	4	PALMBEACH	Diamond	26.787712	-80.099201	I-95 S & EXIT 76
129	1639	4	PALMBEACH	Diamond	26.85018	-80.10891	I-95 S & EXIT 79C
130	1251	4	BROWARD	Parclo Loop	26.06161	-80.35412	I-95 S & EXIT 13A
131	SM38	4	BROWARD	Diamond	26.108251	-80.286725	I-595 W & SR 84
132	SM41	4	BROWARD	Other	26.106361	-80.2805	I-595 E & EXIT 5/6
133	1240	4	BROWARD	Parclo Loop	25.98032	-80.35026	I-75 N & EXIT 7B
134	1239	4	BROWARD	Parclo Loop	25.9772	-80.35263	I-75 S & EXIT 7B



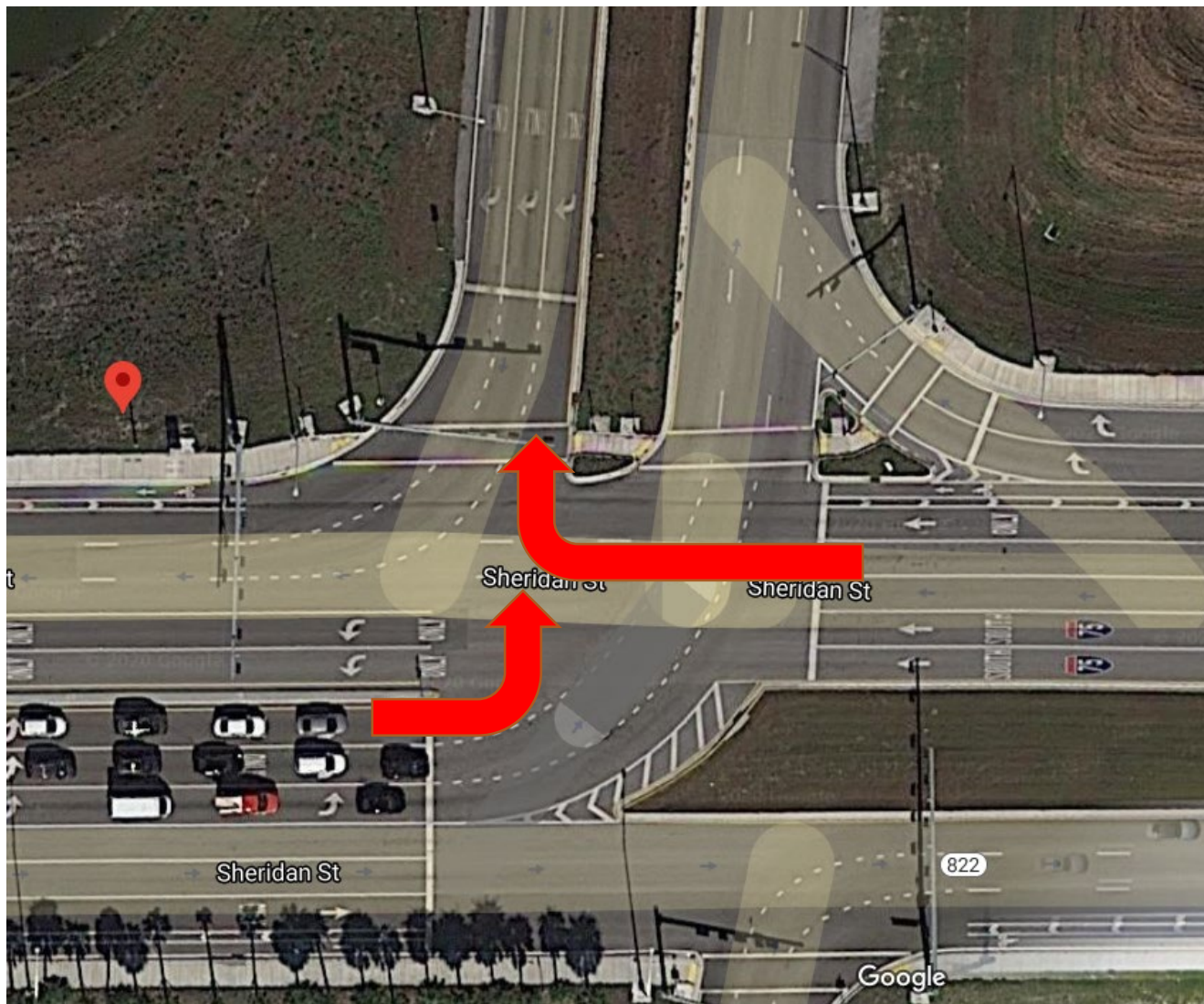
Wrong-way Driving Advanced Countermeasures at Interchange Exits Ramps Palm Beach Implementation Plan

Number of D4 Priority Locations (High, Medium, and Low)		Palm Beach County	
High Priority Locations		21	
Medium Priority Locations		25	
Low Priority Locations		6	
Total		52	
Number of D4 Priority Locations (High and Medium)		Palm Beach County	
		Goes with Existing Project	Stand Alone
High Priority Locations		21	0
Medium Priority Locations		3	22
Total		24	28



High Priority – 48 Locations in D4 and 21 Locations in Palm Beach County

Dual Threat or “Higher Probability” Movements





Medium Priority – 47 Locations in D4 and 25 Locations in Palm Beach County

Possible Movements but Lower Probability (wide median, difficult movement)





Low Priority – 39 Locations in D4 and 6 Locations in Palm Beach County

Unlikely or “Impossible” Movements





Central Office's Wrong-way Driving Advanced Countermeasures at Interchange Exits Ramps Palm Beach Implementation Plan

Location	Priority Rank
I-95 SB @ Lantana Rd	High
I-95 NB @ Lantana Rd	High
I-95 NB @ Congress Ave/Peninsula Corp Dr	High
I-95 SB @ Glades Rd	High
I-95 SB @ Spanish River Blvd	High
I-95 NB @ Spanish River	High
I-95 NB @ Boynton Beach Blvd	High
I-95 SB @ Boynton Beach Blvd	High
I-95 SB @ Belvedere Rd (69A)	High
I-95 SB @ 45th St	High
I-95 SB @ Linton Blvd	High
I-95 SB @ Northlake Blvd	High
I-95 SB @ PB Intl Airport	High
I-95 NB @ PB Intl Airport	High
I-95 NB @ Atlantic Ave	High
I-95 SB @ 10th Ave N	High
I-95 NB @ Palmetto Park Rd	High
I-95 SB @ Palmetto Park Rd	High
I-95 NB @ Belvedere Rd Signal	High
I-95 SB @ Hypoluxo Rd	High
I-95 NB @ Hypoluxo Rd	High

Location	Priority Rank
I-95 NB @ Blue Heron Blvd	Medium
I-95 SB @ Gateway Blvd	Medium
I-95 NB @ Gateway Blvd	Medium
I-95 NB @ Forest Hill Blvd	Medium
I-95 SB @ Atlantic Ave	Medium
I-95 NB @ Linton Blvd	Medium
I-95 NB @ 10th Ave N	Medium
I-95 SB @ Forest Hill Blvd	Medium
I-95 SB @ Blue Heron Blvd	Medium
I-95 SB @ 6th Ave S	Medium
I-95 NB @ 6th Ave S	Medium
I-95 NB @ Palm Beach Lakes Blvd	Medium
I-95 SB @ Palm Beach Lakes Blvd	Medium
I-95 NB @ Glades Rd	Medium
I-95 NB @ Yamato Rd	Medium
I-95 SB @ Woolbright Rd	Medium
I-95 SB @ Okeechobee Blvd	Medium
I-95 NB @ 45th St	Medium
I-95 NB @ Northlake Blvd	Medium
I-95 SB @ PGA Blvd	Medium
I-95 NB @ Yamato Rd	Medium
I-95 NB @ Southern Blvd	Medium
I-95 SB @ Southern Blvd	Medium
I-95 NB @ Okeechobee Blvd	Medium
I-95 NB @ Woolbright Rd	Medium

Location	Priority Rank
I-95 SB @ Congress Ave/Peninsula Corp Dr	Low
I-95 SB @ Belvedere Rd	Low
FL A1A @ PGA Blvd	Low
I-95 NB @ PGA Blvd	Low
I-95 NB @ PGA Blvd	Low
I-95 SB @ Military Trail	Low



- Current Proposed Locations